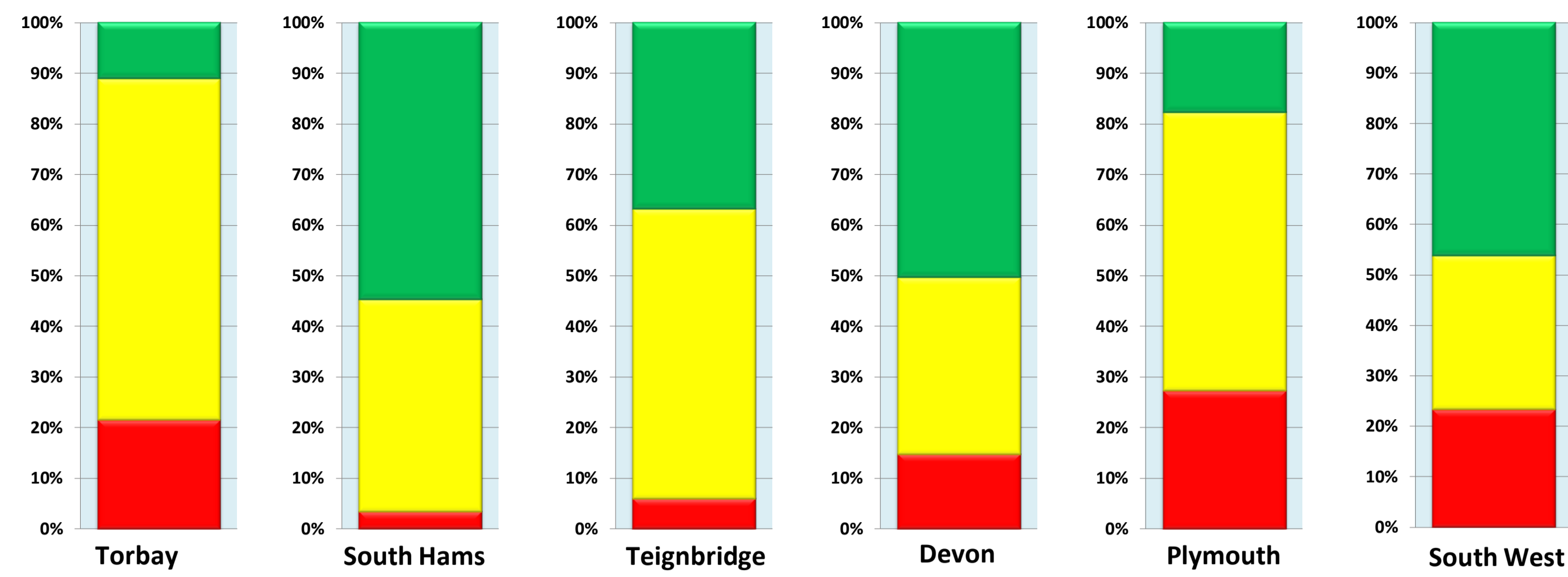


Public Health Outcomes Framework - Summary of significantly worse indicators in Torbay - November 2017



41 outliers out of 190 (Torbay)

Introduction

This summary brings together performance 'outliers' for the Public Health Outcomes Framework (PHOF) for Torbay by life course stage.

Only indicators that were identified as statistically significantly worse than either the England average or the national goal are included in the table below. The contents of the table will be reviewed annually.

The columns represent the proportion of PHOF indicators by their significance for local comparator areas.

The dials represent the proportion of indicators that are significantly worse in each life course.

Indicators that have changed significance since the last update will feature in Quarterly updates section below.

Quarterly Updates

- 3.04 - HIV late diagnosis
- 4.15ii - Excess winter deaths index (single year, age 85+)

Key Symbols

- Sig Worse
- Not Sig
- Sig Better
- ^ Estimated
- * Disclosure control applied
- **Data quality note
- ~Aggregated from known lower geographies

Proportion of significantly worse indicators

Indicators

Time period

Torbay Value

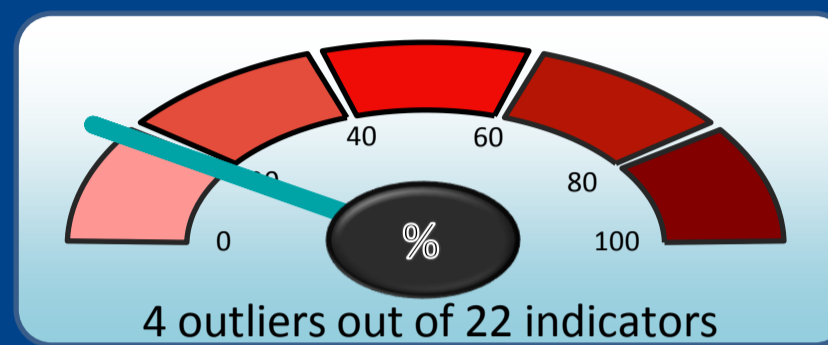
National Value

Unit of Measure

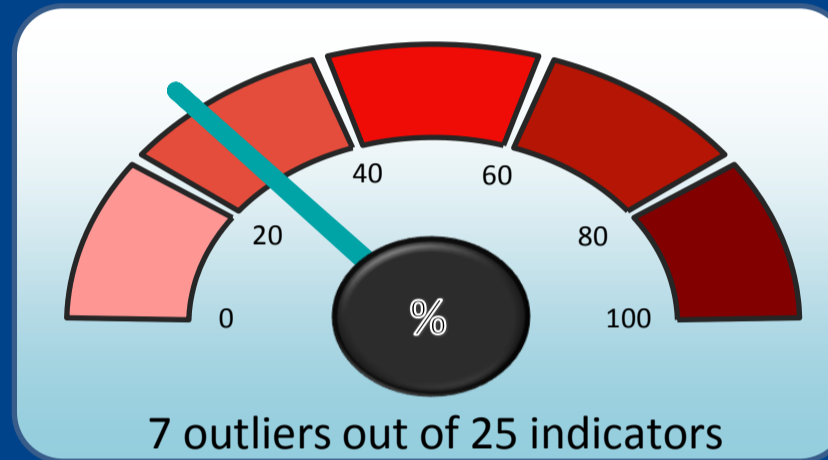
Trend Chart

Trend Guide

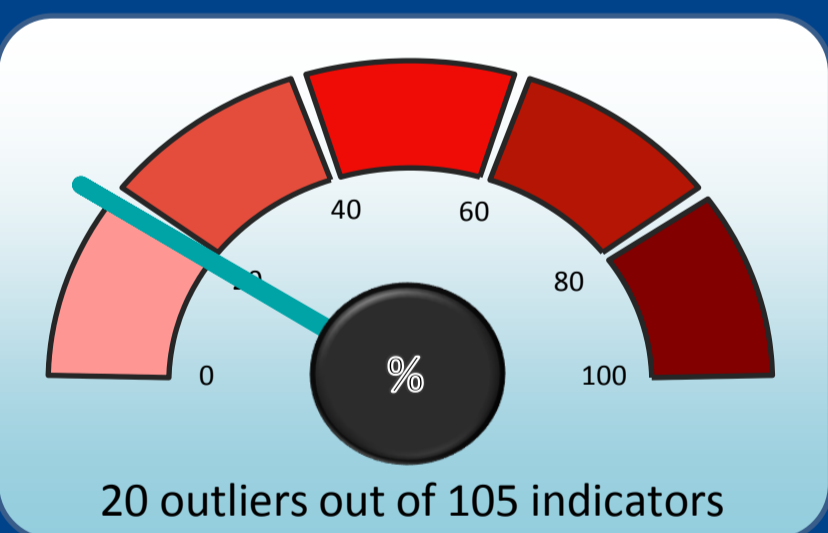
Starting Well
0-4 years



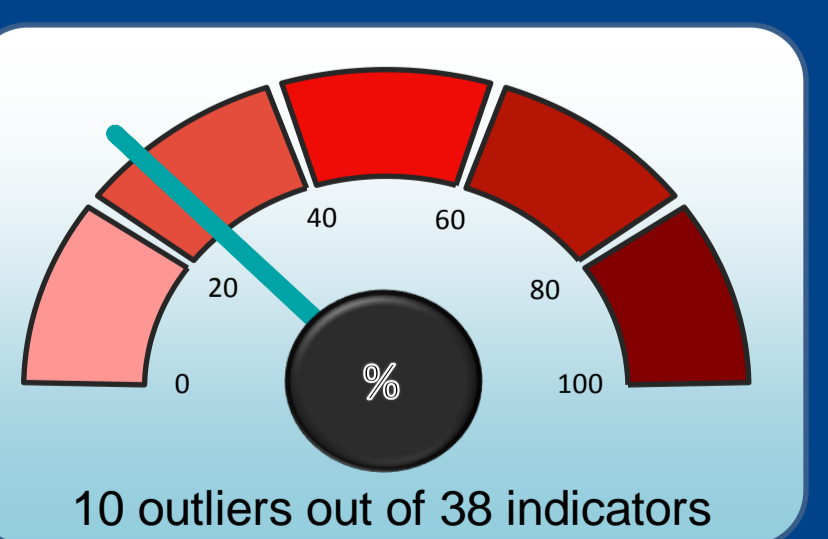
Developing Well
5-24 years



Living and Working Well
15-64 years



Ageing and Dying Well
65+



● 2.02ii - Breastfeeding prevalence at 6-8 weeks after birth (historical method)	2014/15	35.7	43.8	%		Higher is Better
● 2.03 - Smoking status at time of delivery (current method) (Value for 'historical method' is also significantly worse)	2016/17	15.2	10.7	%		Lower is Better
● 2.20xi - Newborn Blood Spot Screening – Coverage	2015/16	77.4^	95.6~	%		Higher is Better
● 3.03xviii - Population vaccination coverage - Flu (2-4 years old)	2016/17	38.4	38.1	%		Higher is Better
● 1.01i - Children in low income families (all dependent children under 20)	2014	23.0	19.9	%		Lower is Better
● 1.01ii - Children in low income families (under 16s)	2014	23.6	20.1	%		Lower is Better
● 1.03 - Pupil absence	2015/16	5.0	4.6	%		Lower is Better
● 2.07i - Hospital admissions caused by unintentional and deliberate injuries (aged 0-14 years)	2015/16	126.6	104.2	Per 10,000		Lower is Better
● 2.07ii - Hospital admissions caused by unintentional and deliberate injuries (aged 15-24 years)	2015/16	259.8	134.1	Per 10,000		Lower is Better
● 2.09i - Smoking Prevalence age 15 years - current smokers (WAY survey)	2014/15	13.6	8.2	%	-	Lower is Better
● 2.09ii - Smoking Prevalence age 15 years - regular smokers (WAY survey)	2014/15	10.4	5.5	%	-	Lower is Better
● 0.1ii - Life expectancy at birth (Male)	2013 - 15	78.9	79.5	Years		Higher is Better
● 0.2iv - Gap in life expectancy at birth between each LA and England (Male)	2013 - 15	-0.6	0.0	Years		Lower is Better
● 1.06i - Adults with a learning disability (LD) who live in stable and appropriate accommodation (Persons)	2015/16	70.1	75.4	%		Higher is Better
● 1.06ii - Adults with an LD who live in stable and appropriate accommodation (Female)	2015/16	67.1	75.6	%		Higher is Better
● 1.08ii - Gap in the employment rate between those with an LD and the overall employment rate (Male)	2015/16	77.4	73.0	% point		Lower is Better
● 1.09i - Sickness absence- the % of employees who had at least 1 day off in the previous week (Newly added)	2014 - 16	3.1	2.1	%		Lower is Better
● 1.09ii - Sickness absence- the % of working days lost due to sickness absence	2014 - 16	1.8	1.2	%		Lower is Better
● 1.12i - Violent crime (including sexual violence) - hospital admissions for violence	2013/14 - 15/16	57.3	44.8	Per 100,000		Lower is Better
● 2.10ii - Emergency Hospital Admissions for Intentional Self-Harm (all ages)	2015/16	398.9	196.5	Per 100,000		Lower is Better
● 2.12 - Excess weight in adults (historical method) (Value for 'current method' is not significant)	2013 - 15	68.4	64.8	%		Lower is Better
● 2.18 - Admission episodes for alcohol-related conditions - narrow definition (Persons)	2015/16	886.0	647.0	Per 100,000		Lower is Better
● 2.18 - Admission episodes for alcohol-related conditions - narrow definition (Male)	2015/16	1,147.0	830.0	Per 100,000		Lower is Better
● 2.18 - Admission episodes for alcohol-related conditions - narrow definition (Female)	2015/16	652.0	483.0	Per 100,000		Lower is Better
● 2.22iv - Cumulative % of eligible population aged 40-74 offered who received a Health Check	2013/14 - 16/17	45.9	48.9	%	-	Higher is Better
● 4.09ii - Proportion of adults in the population in contact with secondary mental health services	2014/15	7.7	5.4	%		Lower is Better
● 4.10 - Suicide rate (Persons) (Newly added)	2014 - 16	14.1	9.9	Per 100,000		Lower is Better
● 4.10 - Suicide rate (Female) (Newly added)	2014 - 16	11.3	4.8	Per 100,000		Lower is Better
● 4.12ii - Preventable sight loss - glaucoma	2015/16	39.2	12.8	Per 100,000		Lower is Better
● 4.12iv - Preventable sight loss - sight loss certifications	2015/16	96.7	41.9	Per 100,000		Lower is Better
● 4.15i - Excess winter deaths index (single year, all ages) (Persons) (Newly added)	Aug 2015 - Jul 2016	27.0	15.1	Ratio		Lower is Better
● 2.20i - Cancer screening coverage - breast cancer (Female)	2016	74.7	75.5	%		Higher is Better
● 2.24i - Emergency hospital admissions due to falls- aged 65 and over (Persons)	2015/16	2,452.0	2,169.0	Per 100,000		Lower is Better
● 2.24i - Emergency hospital admissions due to falls- aged 65 and over (Males)	2015/16	2,129.0	1,733.0	Per 100,000		Lower is Better
● 2.24ii - Emergency hospital admissions due to falls- aged 65-79 (Persons)	2015/16	1,256.0	1,012.0	Per 100,000		Lower is Better
● 2.24ii - Emergency hospital admissions due to falls- aged 65-79 (Male)	2015/16	1,155.0	825.0	Per 100,000		Lower is Better
● 3.03xiv - Population vaccination coverage - Flu (aged 65+)	2016/17	66.4	70.5	%		Higher is Better
● 3.03xv - Population vaccination coverage - Flu (at risk individuals)	2016/17	45.8	48.6	%		Higher is Better
● 4.08 - Mortality rate from specified communicable diseases, including influenza (Persons) (Newly added)	2014 - 16	16.4	10.7	Per 100,000		Lower is Better
● 4.08 - Mortality rate from specified communicable diseases, including influenza (Female) (Newly added)	2014 - 16	17.7	9.9	Per 100,000		Lower is Better
● 4.12i - Preventable sight loss - age related macular degeneration (aged 65+)	2015/16	207.0	114.0	Per 100,000		Lower is Better