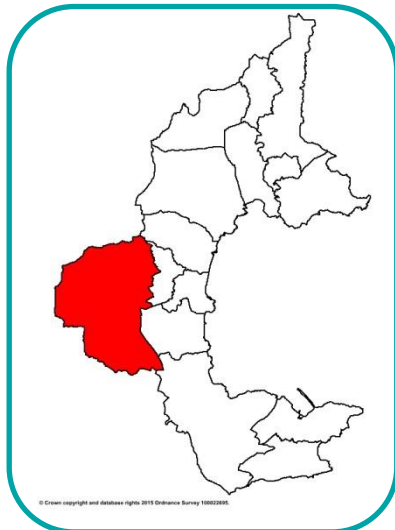


This overview of the Blatchcombe ward is one of fifteen in a series covering the electoral wards of Torbay. For more information please visit: [www.southdevonandtorbay.info](http://www.southdevonandtorbay.info)

**Overview:** Blatchcombe is one of the six wards in Paignton. The population is generally younger, has higher levels of deprivation and lower life expectancy.

**Figure 1: Blatchcombe ward map**



### Key facts

- In 2013, the total resident population of Blatchcombe was around 10,700;
- In 2013, the average age of residents was 40 years;
- Almost 1 in 5 (19%) residents lived in social rented accommodation in 2011.

### Population overview

The Blatchcombe population is generally younger (Table 1 and Figure 2), with around 63% under 50 years of age.

**Table 1: Population by age group, 2013**

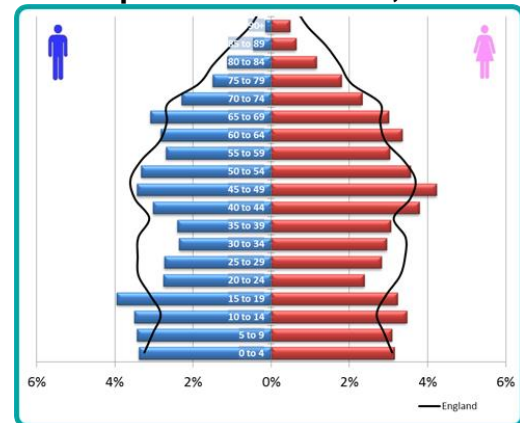
Age	Blatchcombe	Torbay	England
<b>Years</b>	<b>Count</b>		
0 - 29	4,078	38%	31%
30 - 64	4,676	44%	45%
65 - 84	1,784	17%	15%
85+	186	2%	2%
<b>All ages</b>	<b>10,724</b>		

Source: ONS mid-year resident population, 2013.

### Deprivation

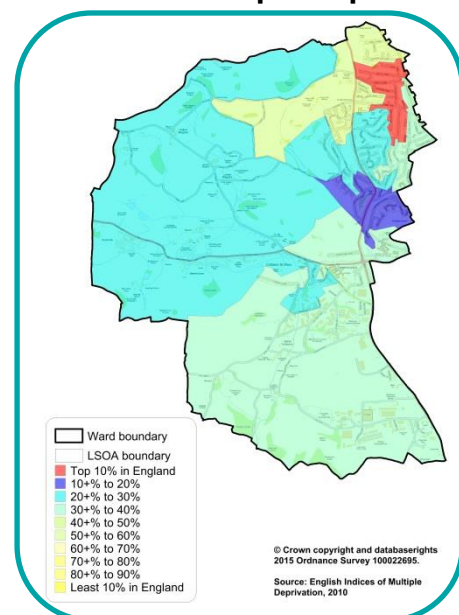
Blatchcombe has two areas in the 20% most deprived in England (red and navy areas shown in Figure 3).

**Figure 2: Population structure, 2013**



Source: ONS mid-year resident population, 2013

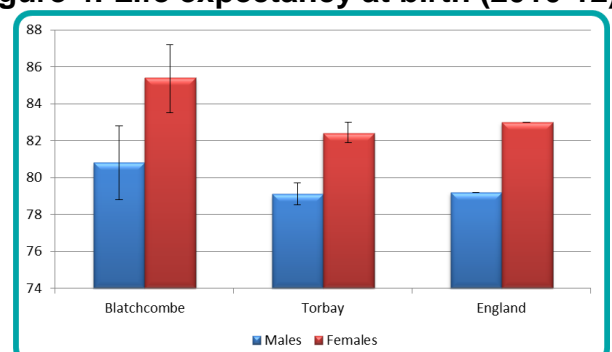
**Figure 3: Index of multiple deprivation, 2010**



### Life expectancy

Female life expectancy at birth in Blatchcombe is the highest in Torbay (Figure 4).

**Figure 4: Life expectancy at birth (2010-12)**



Source: PCMD 2010-12, ONS mid-year resident population 2010-12

### Crime

The rate of crime in Blatchcombe is lower than the Torbay average (Table 2). Almost 30% of crimes are violent (including sexual violence).

**Table 2: Crime and violent crime rate per 1,000 residents (all ages) 2011/12-2013/14**

Area	All crime	Violent crime
Blatchcombe	55	16
Torbay	68	17
England	68*	11

Source: Devon and Cornwall Constabulary, PHOF - England comparator, \*ONS - England and Wales comparator

### Starting well

The proportion of mothers smoking in pregnancy is higher in Blatchcombe compared to Torbay. The proportion of mother's breastfeeding their children are also lower than Torbay and England average (Table 3).

**Table 3: Starting well 2010/11-2013/14**

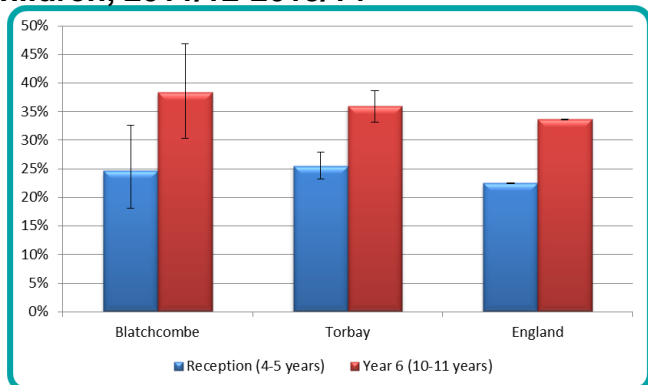
Area	Smoking at birth	Breastfeeding initiation	Breastfeeding at 6-8 weeks
Blatchcombe	24%	62%	33%
Torbay	18%	71%	38%
England	13%	74%	47%

Source: Maternity and Child health dataset, 2010/11-2013/14

### Excess weight in children

Almost 2 in 5 (38%) children are classified as overweight or obese when they leave primary school. This is similar to England (Figure 5).

**Figure 5: Excess weight in primary school children, 2011/12-2013/14**

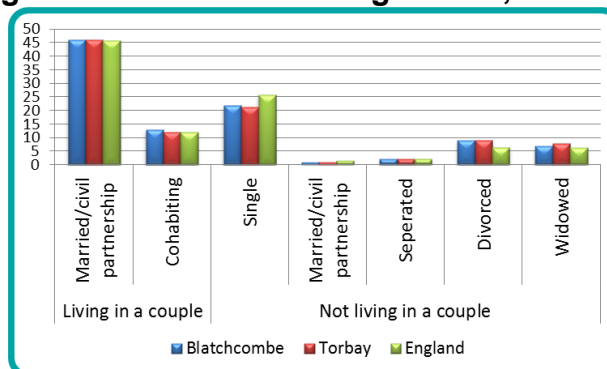


Source: National Child Measurement Programme, 2011/12-2013/14

### Living arrangements

In 2011, around 45 % of residents were married or in a civil partnership (Figure 6).

**Figure 6: Household arrangements, 2011**

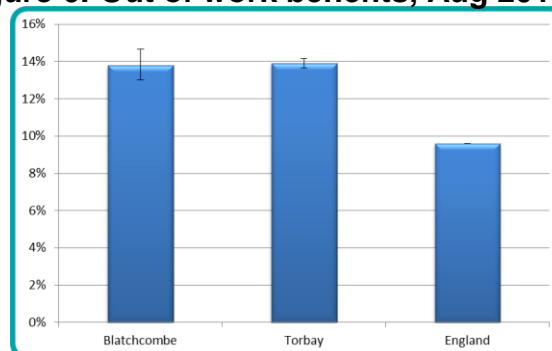


Source: Census, 2011

### Out of work benefits

Blatchcombe has a similar proportion of the working population (16-64yrs) claiming an out of work benefit compared to Torbay; however this is higher than England (Figure 6).

**Figure 6: Out of work benefits, Aug 2014**



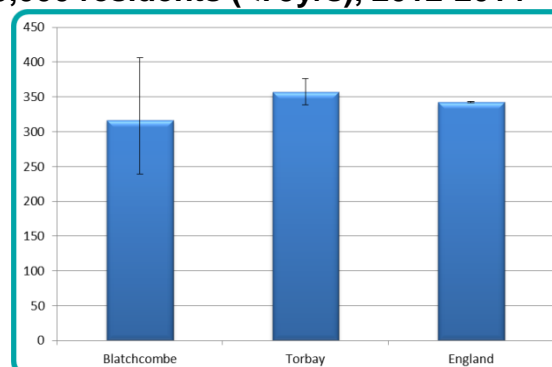
Source: Department of Work and Pensions, Aug 2014

### Premature mortality

The rate of premature mortality (<75yrs) is lower in Blatchcombe (Figure 7). Around 30 people per year die prematurely.

Cancer accounts for 41% of premature mortality in Clifton with Maidenway.

**Figure 7: Premature mortality rate per 100,000 residents (<75yrs), 2012-2014**



Source: Primary Care Mortality Database 2012-14, ONS mid-year resident population 2011-13. Directly age standardised rate (ESP 2013)