

# AN OVERVIEW OF THE CHURSTON WITH GALMPTON POPULATION – APRIL 2015

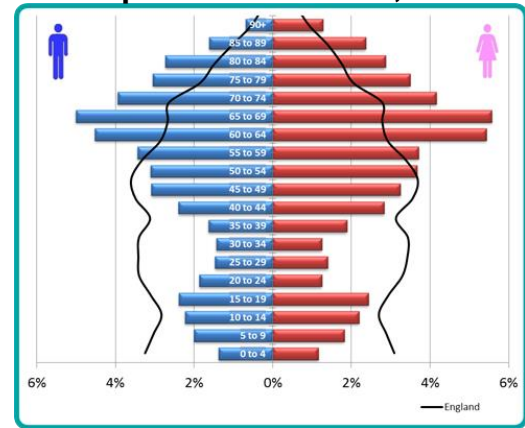
This overview of the Churston with Galmpton ward is one of fifteen in a series covering the electoral wards of Torbay. For more information please visit: [www.southdevonandtorbay.info](http://www.southdevonandtorbay.info)

**Overview:** Churston with Galmpton is one of the six wards in Paignton. The population is generally older, has higher life expectancy and lower levels of deprivation.

**Figure 1: Churston with Galmpton ward map**



**Figure 2: Population structure, 2013**



Source: ONS mid-year resident population, 2013

## Key facts

- In 2013, the total resident population of Churston with Galmpton was around 6,650;
- In 2013, the average age of residents was 52 years;
- Almost 9 in 10 (87%) residents owned their own home in 2011.

## Population overview

The Churston with Galmpton population is generally older (Table 1 and Figure 2), with around 61% over 50 years of age.

**Table 1: Population by age group, 2013**

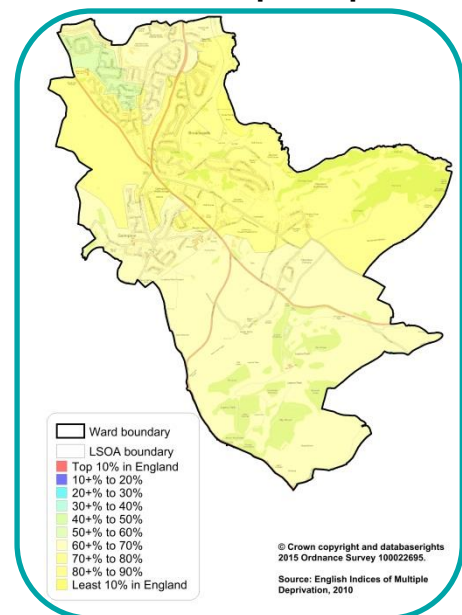
Age Years	Churston... Count	Torbay	England	
0 - 29	1,429	21%	31%	28%
30 - 64	2,730	41%	44%	45%
65 - 84	2,087	31%	21%	15%
85+	404	6%	4%	2%
All ages	6,650			

Source: ONS mid-year resident population, 2013.

## Deprivation

Churston with Galmpton is the least deprived ward in Torbay; with two areas within the 10% least deprived in England (yellow areas - Fig 3).

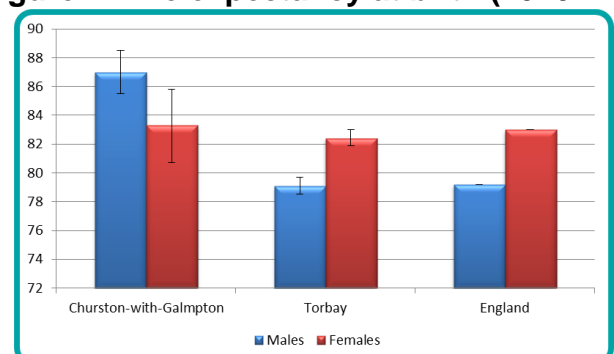
**Figure 3: Index of multiple deprivation, 2010**



## Life expectancy

Female life expectancy at birth in Churston with Galmpton is the highest in Torbay (Figure 4).

**Figure 4: Life expectancy at birth (2010-12)**



Source: PCMD 2010-12, ONS mid-year resident population 2010-12

## Crime

The rate of crime in Churston with Galmpton is lower than the Torbay average. Less than 1 in 4 crimes are violent (including sexual violence).

**Table 2: Crime and violent crime rate per 1,000 residents (all ages) 2011/12-2013/14**

Area	All crime	Violent crime
Churston...	19	3
Torbay	68	17
England	68*	11

Source: Devon and Cornwall Constabulary, PHOF - England comparator, \*ONS - England and Wales comparator

## Starting well

The proportion of mothers smoking in pregnancy is lower in Churston with Galmpton compared to Torbay. The proportion of mother's breastfeeding their children are also higher than Torbay and England average (Table 3).

**Table 3: Starting well 2010/11-2013/14**

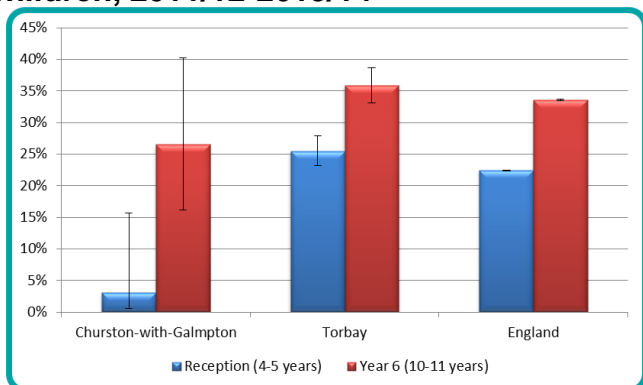
Area	Smoking at birth	Breastfeeding initiation	Breastfeeding at 6-8 weeks
Churston...	7%	85%	52%
Torbay	18%	71%	38%
England	13%	74%	47%

Source: Maternity and Child health dataset, 2010/11-2013/14

## Excess weight in children

More than 1 in 4 children are classified as overweight or obese when they leave primary school. This is similar to England (Figure 5).

**Figure 5: Excess weight in primary school children, 2011/12-2013/14**

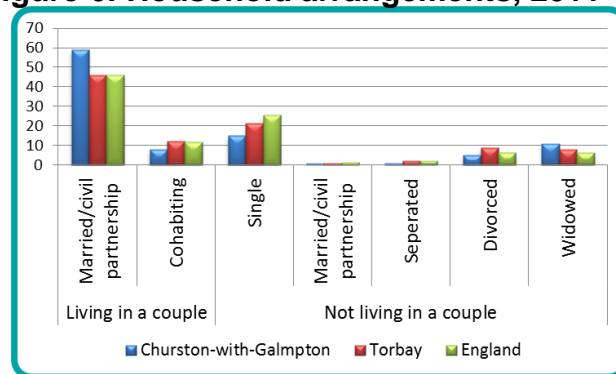


Source: National Child Measurement Programme, 2011/12-2013/14

## Living arrangements

In 2011, around 2 in 5 residents were married or in a civil partnership (Figure 6).

**Figure 6: Household arrangements, 2011**

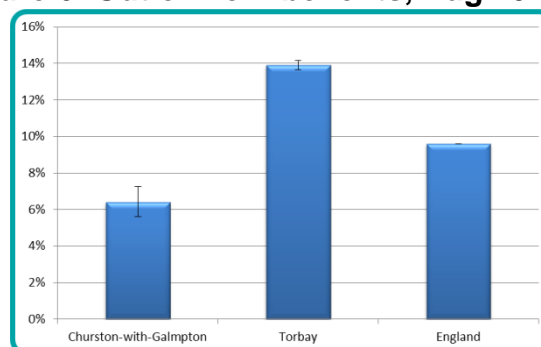


Source: Census, 2011

## Out of work benefits

Churston with Galmpton has a lower proportion of the working population (16-64yrs) claiming an out of work benefit compared to the Torbay and England average (Figure 6).

**Figure 6: Out of work benefits, Aug 2014**



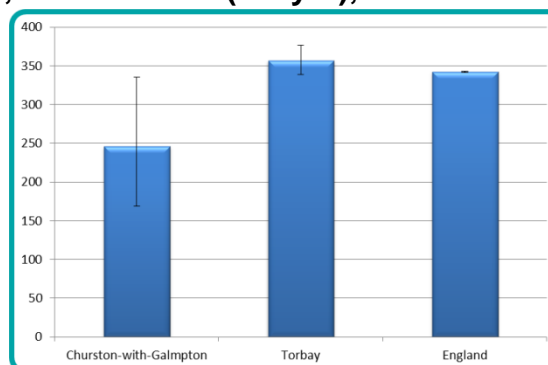
Source: Department of Work and Pensions, Aug 2014

## Premature mortality

The rate of premature mortality (<75yrs) is lower in Churston with Galmpton (Figure 7). Around 20 people per year die prematurely.

Cancer accounts for 50% of premature mortality in Clifton with Maidenway.

**Figure 7: Premature mortality rate per 100,000 residents (<75yrs), 2012-2014**



Source: Primary Care Mortality Database 2012-14, ONS mid-year resident population 2011-13. Directly age standardised rate (ESP 2013)