

AN OVERVIEW OF THE CLIFTON WITH MAIDENWAY POPULATION – APRIL 2015

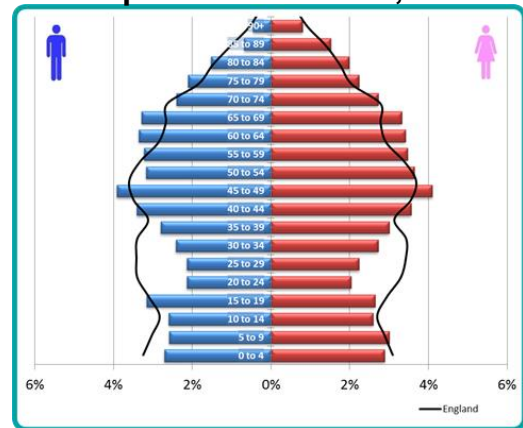
This overview of the Clifton with Maidenway ward is one of fifteen in a series covering the electoral wards of Torbay. For more information please visit: www.southdevonandtorbay.info

Overview: Clifton with Maidenway is one of the six wards in Paignton. The population is generally younger, has moderate levels of deprivation and life expectancy similar to the Torbay average.

Figure 1: Clifton with Maidenway ward map

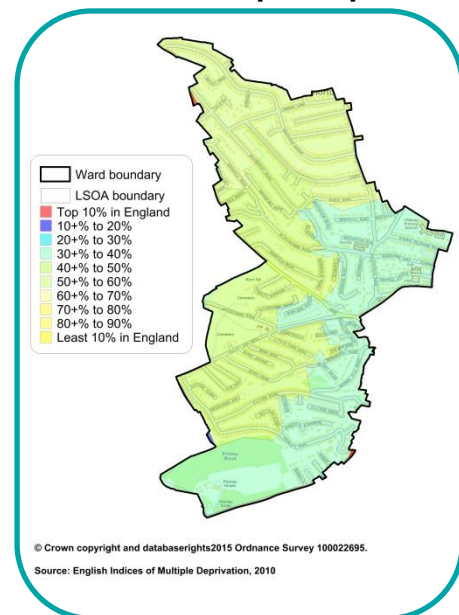


Figure 2: Population structure, 2013



Source: ONS mid-year resident population, 2013

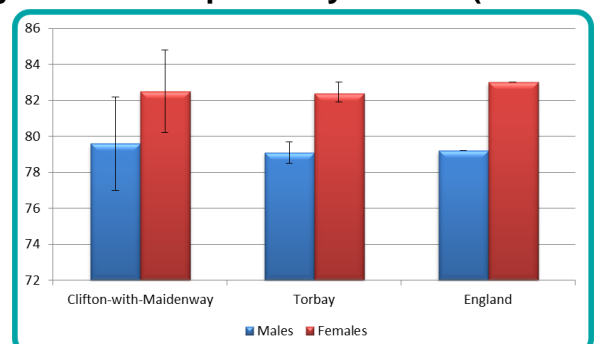
Figure 3: Index of multiple deprivation, 2010



Life expectancy

Life expectancy at birth in Clifton with Maidenway is similar to the Torbay average.

Figure 4: Life expectancy at birth (2010-12)



Source: PCMD 2010-12, ONS mid-year resident population 2010-12

Key facts

- In 2013, the total resident population of Clifton with Maidenway was around 7,200;
- In 2013, the average age of residents was 44 years;
- Around 4 in 5 (81%) residents owned their own home in 2011.

Population overview

The Clifton with Maidenway population is generally younger (Table 1 and Figure 2), with around 55% under 50 years of age.

Table 1: Population by age group, 2013

Age	Clifton...	Torbay	England
Years	Count		
0 - 29	2,234	31%	28%
30 - 64	3,267	45%	45%
65 - 84	1,455	20%	15%
85+	243	3%	2%
All ages	7,199		

Source: ONS mid-year resident population, 2013.

Deprivation

Clifton with Maidenway has levels of deprivation slightly above the England average (green areas shown in Figure 3).

Crime

The rate of crime in Clifton with Maidenway is lower than the Torbay average. More than 1 in 4 crimes are violent (including sexual violence).

Table 2: Crime and violent crime rate per 1,000 residents (all ages) 2011/12-2013/14

Area	All crime	Violent crime
Clifton...	25	7
Torbay	68	17
England	68*	11

Source: Devon and Cornwall Constabulary, PHOF - England comparator, *ONS - England and Wales comparator

Starting well

The proportion of mothers smoking in pregnancy is lower in Clifton with Maidenway compared to Torbay. The proportion of mother's breastfeeding their children are similar to the Torbay and England average (Table 3).

Table 3: Starting well 2010/11-2013/14

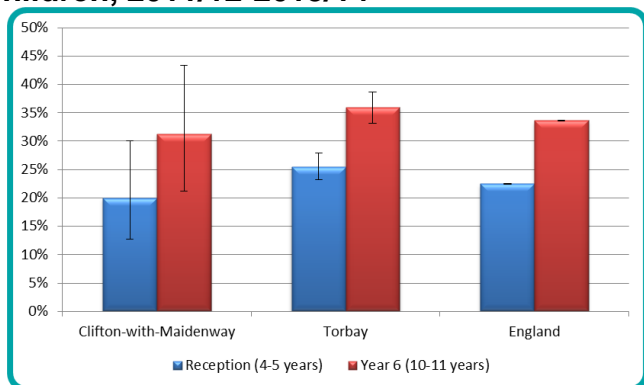
Area	Smoking at birth	Breastfeeding initiation	Breastfeeding at 6-8 weeks
Clifton...	15%	70%	38%
Torbay	18%	71%	38%
England	13%	74%	47%

Source: Maternity and Child health dataset, 2010/11-2013/14

Excess weight in children

Around 30% of children are classified as overweight or obese when they leave primary school. This is similar to England (Figure 5).

Figure 5: Excess weight in primary school children, 2011/12-2013/14

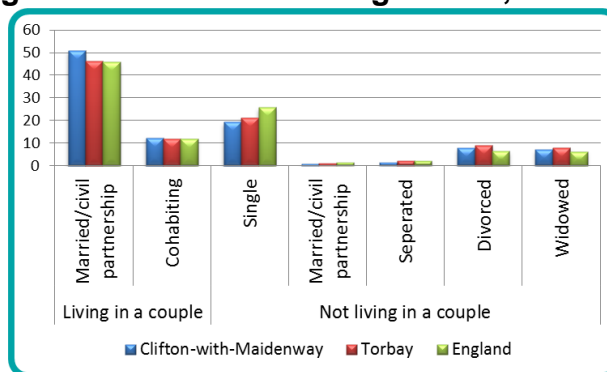


Source: National Child Measurement Programme, 2011/12-2013/14

Living arrangements

In 2011, around half of Clifton with Maidenway residents were married or in a civil partnership.

Figure 6: Household arrangements, 2011

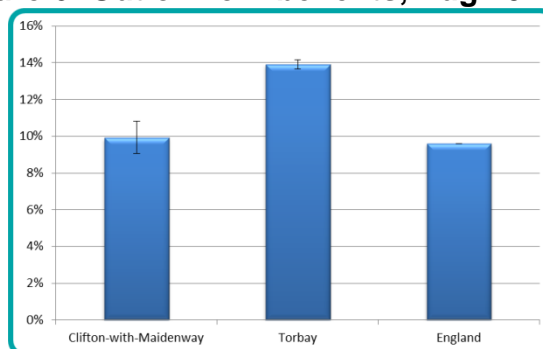


Source: Census, 2011

Out of work benefits

Clifton with Maidenway has a significantly lower proportion of the working population (16-64yrs) claiming an out of work benefit compared to both England and Torbay (Figure 6).

Figure 6: Out of work benefits, Aug 2014



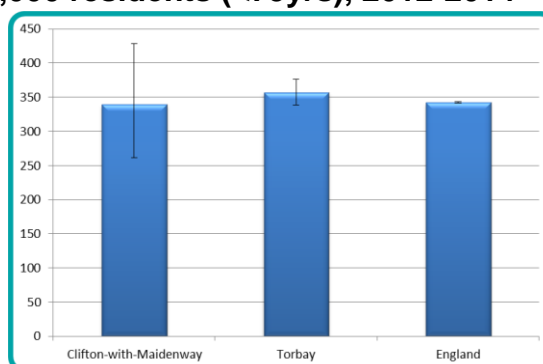
Source: Department of Work and Pensions, Aug 2014

Premature mortality

The rate of premature mortality (<75yrs) is lower in Clifton with Maidenway (Figure 7). Around 25 people per year die prematurely.

Cancer accounts for 42% of premature mortality in Clifton with Maidenway.

Figure 7: Premature mortality rate per 100,000 residents (<75yrs), 2012-2014



Source: Primary Care Mortality Database 2012-14, ONS mid-year resident population 2011-13. Directly age standardised rate (ESP 2013)