

This overview of the Wellswood ward is one of fifteen in a series covering the electoral wards of Torbay. For more information please visit: www.southdevonandtorbay.info

Overview: Wellswood is one of the seven wards in Torquay. On average, the Wellswood population has a lower than average life expectancy, relatively high levels of deprivation and a generally older population.

Figure 1: Wellswood ward map



Key facts

- In 2013, the total resident population of Wellswood was around 7,700;
- In 2013, the average age of residents was 52 years;
- Almost 1 in 3 (32%) residents lived in private rented accommodation in 2011;
- Life expectancy at birth is amongst the lowest in Torbay; male (77yrs) and female (80yrs).

Population overview

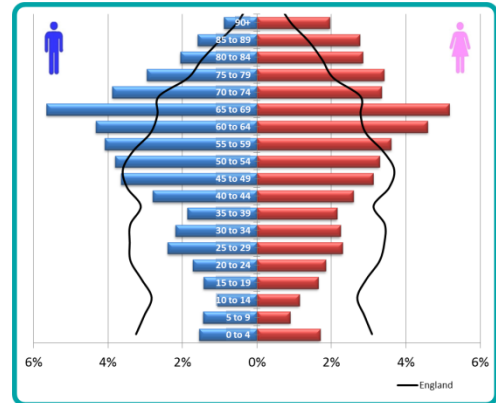
The Wellswood population is generally older (Table 1 and Figure 2) with around 60% over 50 years of age.

Table 1: Population by age group, 2013

Age	Wellswood	Torbay	England
Years	Count		
0 - 29	1,478	19%	31%
30 - 64	3,420	44%	45%
65 - 84	2,262	29%	15%
85+	555	7%	4%
All ages	7,715		

Source: ONS mid-year resident population, 2013.

Figure 2: Population structure, 2013

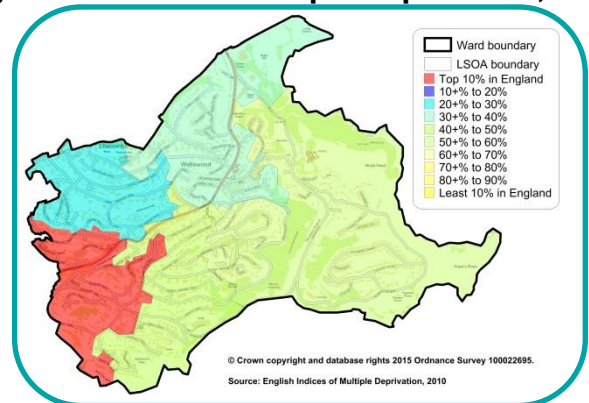


Source: ONS mid-year resident population, 2013

Deprivation

Wellswood contains an area ranked in the top 10% most deprived in England (area in red).

Figure 3: Index of multiple deprivation, 2010



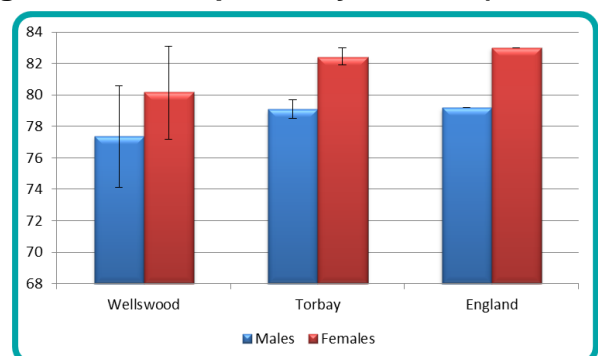
© Crown copyright and database rights 2015 Ordnance Survey 100022895.

Source: English Indices of Multiple Deprivation, 2010

Life expectancy

Life expectancy at birth in Wellswood is amongst the lowest in Torbay (Figure 4).

Figure 4: Life expectancy at birth (2010-12)



Source: PCMD 2010-12, ONS mid-year resident population 2010-12

Crime

The rate of crime in Wellswood is higher than the Torbay average (Table 2). Around 1 in 4 crimes are violent (including sexual violence).

Table 2: Crime and violent crime rate per 1,000 residents (all ages) 2011/12-2013/14

Area	All crime	Violent crime
Wellswood	82	21
Torbay	68	17
England	68*	11

Source: Devon and Cornwall Constabulary, PHOF - England comparator, *ONS - England and Wales comparator

Starting well

The proportion of mothers smoking in pregnancy is lower in Wellswood compared to Torbay. Wellswood has a higher proportion of mother's breastfeeding their children compared to Torbay and England (Table 3).

Table 3: Starting well 2010/11-2013/14

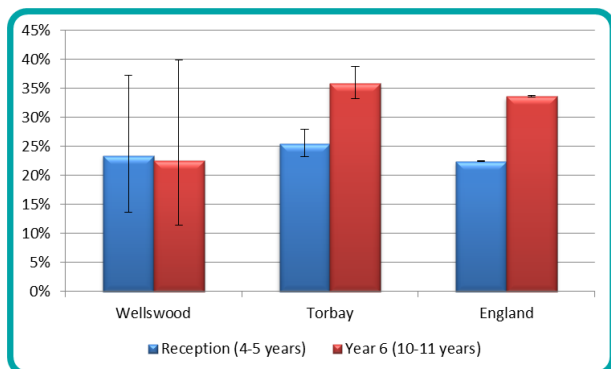
Area	Smoking at birth	Breastfeeding initiation	Breastfeeding at 6-8 weeks
Wellswood	14%	80%	50%
Torbay	18%	71%	38%
England	13%	74%	47%

Source: Maternity and Child health dataset, 2010/11-2013/14

Excess weight in children

Around 1 in 4 primary school age children are classified as overweight or obese. This is lower than the Torbay average (Figure 5).

Figure 5: Excess weight in primary school children, 2011/12-2013/14

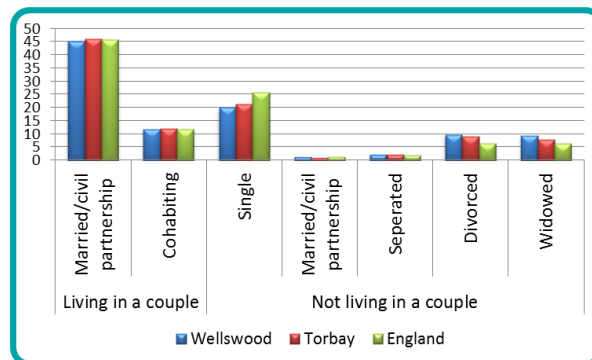


Source: National Child Measurement Programme, 2011/12-2013/14

Living arrangements

In 2011, around 1 in 10 (9%) Wellswood residents were widowed (Figure 6).

Figure 6: Household arrangements, 2011

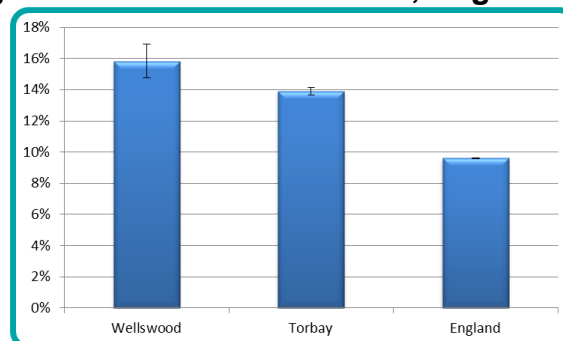


Source: Census, 2011

Out of work benefits

Wellswood has a significantly higher proportion of the working population (16-64yrs) claiming an out of work benefit compared to both the England and Torbay average (Figure 6).

Figure 6: Out of work benefits, Aug 2014



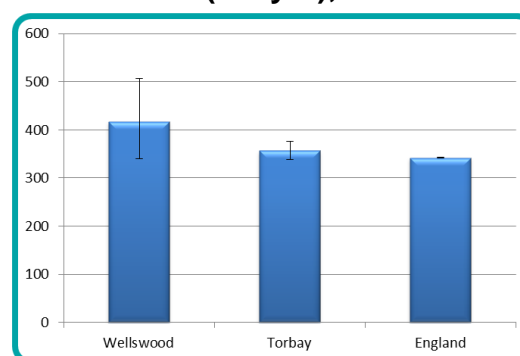
Source: Department of Work and Pensions, Aug 2014

Premature mortality

The rate of premature mortality (<75yrs) is higher in Wellswood (Figure 7). Around 40 people per year die prematurely in Wellswood.

Cancer accounts for 42% of premature mortality in Wellswood.

Figure 7: Premature mortality rate per 100,000 residents (<75yrs), 2012-2014



Source: Primary Care Mortality Database 2012-14, ONS mid-year resident population 2011-13. Directly age standardised rate (ESP 2013)