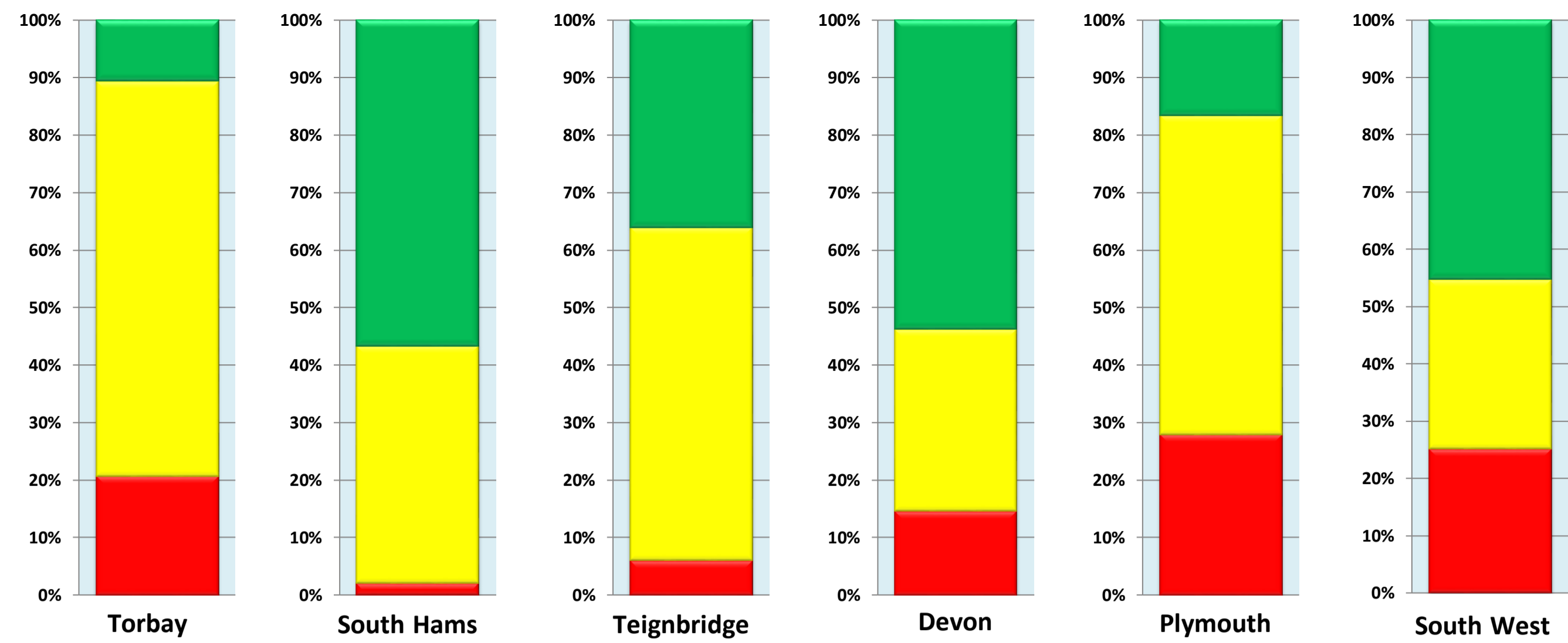


Public Health Outcomes Framework - Summary of significantly worse indicators in Torbay - August 2017



37 outliers out of 179 (Torbay)

Introduction

This summary brings together performance 'outliers' for the Public Health Outcomes Framework (PHOF) for Torbay by life course stage. Only indicators that were identified as statistically significantly worse than the England average are included in the table below. The contents of the table will be reviewed annually.

The columns represent the proportion of PHOF indicators by their significance for local comparator areas. The 'dials' represent the proportion of indicators that are significantly worse in each life course.

Indicators that have changed significance since the last update will feature in Quarterly updates section below.

Quarterly Updates

- 1.17 - Fuel Poverty
- 2.22iii - Cumulative % of eligible population aged 40-74 offered a Health Check
- 2.22v - Cumulative % of eligible population aged 40-74 received a Health Check
- * 4.12iii - Preventable sight loss - diabetic eye disease

Key Symbols

● Sig Worse ● Not Sig ● Sig Better ○ Not calculated ^ Estimated * Disclosure control applied **Data quality note ~Aggregated from known lower geographies

Proportion of significantly worse indicators

Indicators

Time period

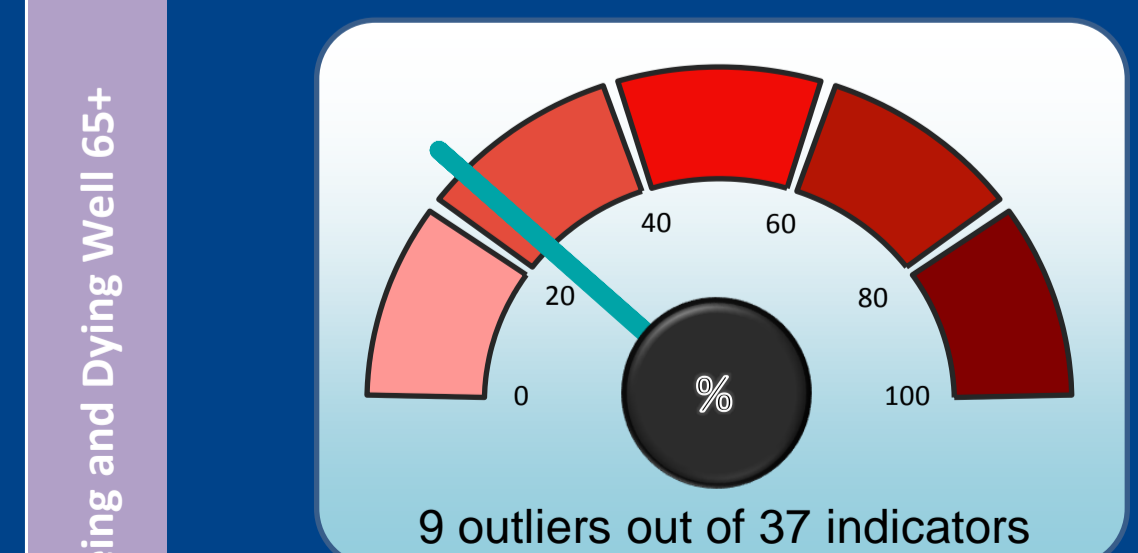
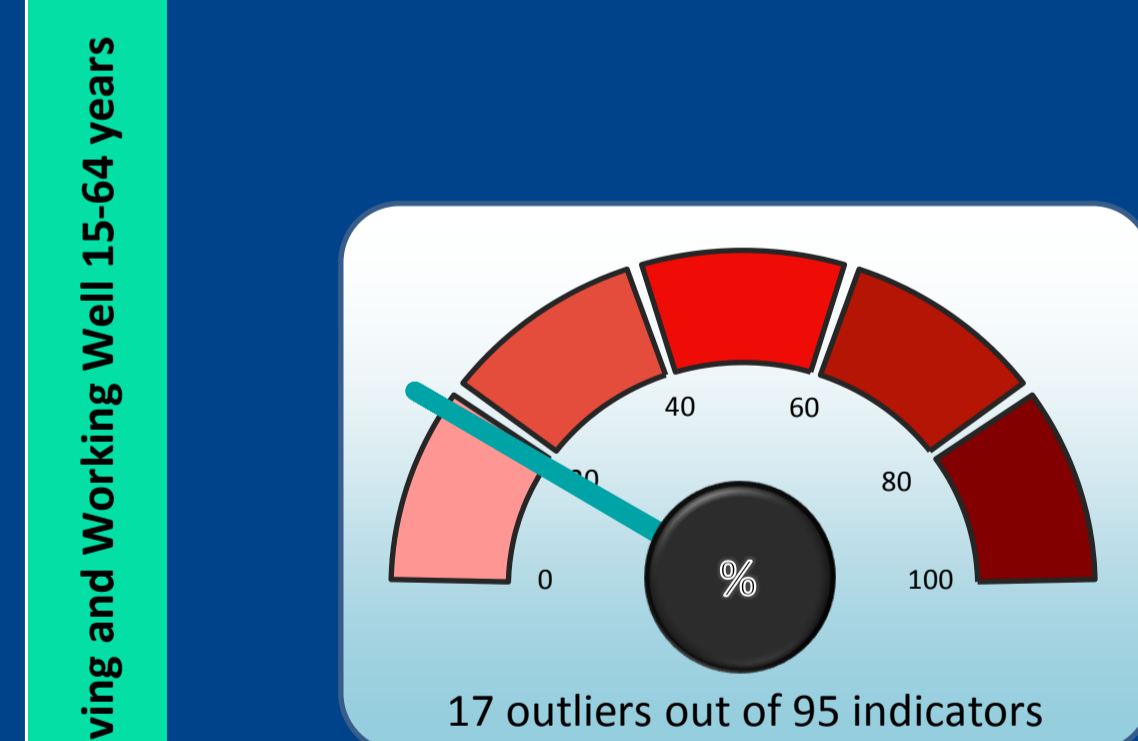
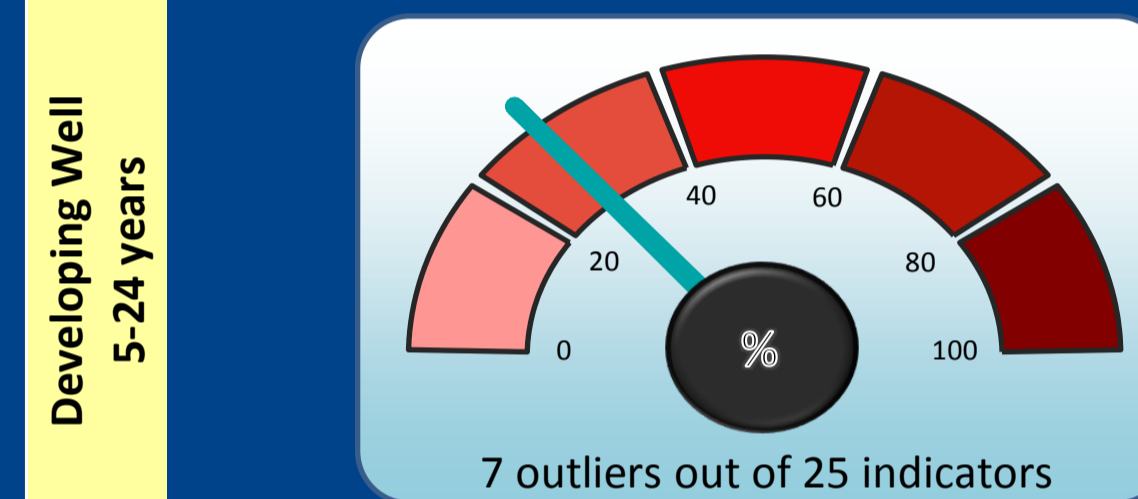
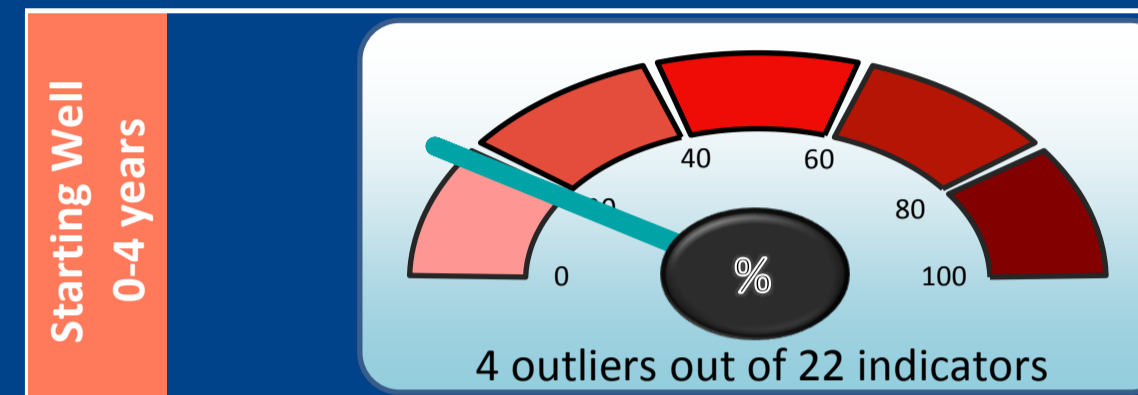
Torbay Value

National Value

Unit of Measure

Trend Chart

Trend Guide



Starting Well 0-4 years	● 2.02ii - Breastfeeding - Breastfeeding prevalence at 6-8 weeks after birth	2014/15	35.7	43.8	%		Higher is Better
	● 2.03 - Smoking status at time of delivery	2015/16	15.0	10.6**	%		Lower is Better
	● 2.20xi - Newborn Blood Spot Screening – Coverage	2015/16	77.4^	95.6~	%		Higher is Better
	● 3.03xviii - Population vaccination coverage - Flu (2-4 years old)	2016/17	38.4	38.1	%		Higher is Better
Developing Well 5-24 years	● 1.01i - Children in low income families (all dependent children under 20)	2014	23.0	19.9	%		Lower is Better
	● 1.01ii - Children in low income families (under 16s)	2014	23.6	20.1	%		Lower is Better
	● 1.03 - Pupil absence	2015/16	5.0	4.6	%		Lower is Better
	● 2.07i - Hospital admissions caused by unintentional and deliberate injuries (aged 0-14 years)	2015/16	126.6	104.2	Per 10,000		Lower is Better
	● 2.07ii - Hospital admissions caused by unintentional and deliberate injuries (aged 15-24 years)	2015/16	259.8	134.1	Per 10,000		Lower is Better
	● 2.09i - Smoking Prevalence age 15 years - current smokers (WAY survey)	2014/15	13.6	8.2	%	-	Lower is Better
	● 2.09ii - Smoking Prevalence age 15 years - regular smokers (WAY survey)	2014/15	10.4	5.5	%	-	Lower is Better
Living and Working Well 15-64 years	● 0.1ii - Life expectancy at birth (Male)	2013 - 15	78.9	79.5	Years		Higher is Better
	● 0.2iv - Gap in life expectancy at birth between each LA and England (Male)	2013 - 15	-0.6	0.0	Years		Lower is Better
	● 1.06i - Adults with a learning disability (LD) who live in stable and appropriate accommodation (Persons)	2015/16	70.1	75.4	%		Higher is Better
	● 1.06i - Adults with a LD who live in stable and appropriate accommodation (Female)	2015/16	67.1	75.6	%		Higher is Better
	● 1.08ii - Gap in the employment rate between those with a LD and the overall employment rate (Male)	2015/16	77.4	73.0	% point		Lower is Better
	● 1.09ii - Sickness absence- the percent of working days lost due to sickness absence (Newly added)	2013 - 15	2.0	1.3	%		Lower is Better
	● 1.12i - Violent crime (including sexual violence) - hospital admissions for violence	2013/14 - 15/16	57.3	44.8	Per 100,000		Lower is Better
	● 2.10ii - Emergency Hospital Admissions for Intentional Self-Harm (all ages)	2015/16	398.9	196.5	Per 100,000		Lower is Better
	● 2.12 - Excess weight in adults	2013 - 15	68.4	64.8	%		Lower is Better
	● 2.18 - Admission episodes for alcohol-related conditions - narrow definition (Persons)	2015/16	886.0	647.0	Per 100,000		Lower is Better
	● 2.18 - Admission episodes for alcohol-related conditions - narrow definition (Male)	2015/16	1,147.0	830.0	Per 100,000		Lower is Better
	● 2.18 - Admission episodes for alcohol-related conditions - narrow definition (Female)	2015/16	652.0	483.0	Per 100,000		Lower is Better
	● 2.22iv - Cumulative % of eligible population aged 40-74 offered who received a Health Check	2013/14 - 16/17	45.9	48.9	%	-	Higher is Better
	● 3.04 - HIV late diagnosis	2013 - 15	53.3	40.1	%		Lower is Better
	● 4.09ii - Proportion of adults in the population in contact with secondary MHS	2014/15	7.7	5.4	%		Lower is Better
	● 4.12ii - Preventable sight loss - glaucoma (Newly added)	2015/16	39.2	12.8	Per 100,000		Lower is Better
● 4.12iv - Preventable sight loss - sight loss certifications	2015/16	96.7	41.9	Per 100,000		Lower is Better	
Ageing and Dying Well 65+	● 2.20i - Cancer screening coverage - breast cancer (Female)	2016	74.7	75.5	%		Higher is Better
	● 2.24i - Emergency hospital admissions due to falls- aged 65 and over (Persons)	2015/16	2,452.0	2,169.0	Per 100,000		Lower is Better
	● 2.24i - Emergency hospital admissions due to falls- aged 65 and over (Males)	2015/16	2,129.0	1,733.0	Per 100,000		Lower is Better
	● 2.24ii - Emergency hospital admissions due to falls- aged 65-79 (Persons)	2015/16	1,256.0	1,012.0	Per 100,000		Lower is Better
	● 2.24ii - Emergency hospital admissions due to falls- aged 65-79 (Male)	2015/16	1,155.0	825.0	Per 100,000		Lower is Better
	● 3.03xiv - Population vaccination coverage - Flu (aged 65+)	2016/17	66.4	70.5	%		Higher is Better
	● 3.03xv - Population vaccination coverage - Flu (at risk individuals)	2016/17	45.8	48.6	%		Higher is Better
	● 4.12i - Preventable sight loss - age related macular degeneration (aged 65+) (Newly added)	2015/16	207.0	114.0	Per 100,000		Lower is Better
	● 4.15ii - Excess winter deaths index (single year, age 85+)	Aug 2014 - Jul 2015	62.5	40.1	Ratio		Lower is Better