

The purpose of this profile is to give an overview of the current and future population of Torbay. This is to provide local summary statistics and help organisations to plan future services appropriately.

Torbay had 1,974 deaths and 974 births in 2023. Without inward migration, Torbay's population would shrink. Torbay's overall profile is one that is older than the England average

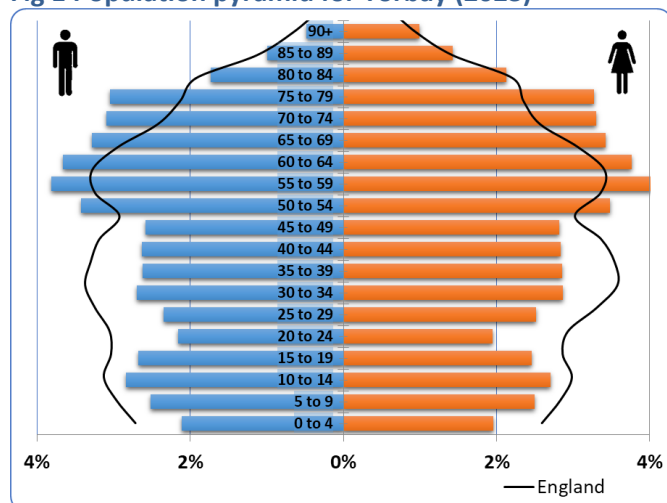
Headlines

- Torbay's total population is estimated to grow by 5% between 2023 and 2033 (Table 1). This is less than England as a whole, which is estimated to grow by 6.8%
- By 2033, Torbay's population aged 65+ is expected to increase by a quarter from around 37,900 to 47,900, and Torbay's population aged 80+ is expected to increase by around 40% to 15,200.
- In 2023, 974 Torbay residents were born and 1,974 Torbay residents died. The gap between births and deaths is widening.

Ageing

Overall, Torbay has an ageing population, with proportionately more older people compared to England, shown by the bars that overlap the black line in Figure 1 below.

Fig 1 Population pyramid for Torbay (2023)



Source: Office for National Statistics mid-year population estimates, 2023

Estimated counts of residents by age group over time are presented in Table 1.

The increase in the older 65+ age groups and especially 80+, could increase need and demand for services and infrastructure such as adult social care, and primary, secondary and tertiary healthcare.

As Torbay's population ages, the ratio of the workforce to retirement age population is expected to decrease. In 2023, for every person of retirement age, there were 2 people of

working age in Torbay. This ratio is projected to fall to 1.8 in 2028 and 1.6 in 2033. This compares to 3.4 people in England.

Table 1: Current and future resident population by age group in Torbay (2023-2033)

Age group	2023 (latest)	2028	2033	% change (from 2023 - 2033)
0 - 4	5,666	6,040	6,086	7%
5-9	6,997	6,524	6,377	-9%
10-14	7,723	7,627	6,981	-10%
15-19	7,161	7,902	7,605	6%
20-24	5,729	5,957	6,589	15%
25-29	6,784	6,024	6,493	-4%
30-34	7,751	6,847	6,304	-19%
35-39	7,643	7,498	7,156	-6%
40-44	7,631	7,804	8,104	6%
45-49	7,539	7,987	8,456	12%
50-54	9,630	8,056	8,735	-9%
55-59	10,955	10,286	8,836	-19%
60-64	10,363	11,896	11,386	10%
65-69	9,362	11,455	12,476	33%
70-74	8,922	9,639	11,275	26%
75-79	8,817	8,573	8,958	2%
80-84	5,383	7,518	7,215	34%
85-89	3,367	3,873	5,395	60%
90+	2,062	2,239	2,600	26%
All ages	139,485	143,745	147,032	5%

Source: Office for National Statistics mid-year population estimates 2023, population projections (2018 based). May not sum due to rounding.

Note the projections and % changes are likely to change when the ONS next re-base their projections from the current 2018 base.

Towns and Wards

A population summary by town and electoral ward is shown in Table 2. There is demographic variation with older populations in Wellswood, and Churston with Galmpton, and a younger population in King's Ash, Barton with Watcombe, Ellacombe and Collaton St Mary.

Table 2: Estimated resident population by electoral ward, Torbay, 2022

	Number	% of Torbay pop	Average age (years)
Torbay	139,479	-	49
Town			
Brixham	16,781	12.0%	55
Paignton	53,316	38.2%	50
Torquay	69,382	49.7%	46
Ward			
Barton with Watcombe	12,078	8.7%	40
Churston with Galmpton	7,103	5.1%	57
Clifton with Maidenway	8,153	5.8%	47
Cockington with Chelston	8,243	5.9%	47
Collaton St Mary	3,373	2.4%	42
Ellacombe	8,276	5.9%	41
Furzeham with Summercombe	9,885	7.1%	56
Goodrington with Roselands	7,454	5.3%	54
King's Ash	7,919	5.7%	38
Preston	10,550	7.6%	52
Roundham with Hyde	8,764	6.3%	51
Shiphay	8,094	5.8%	43
St Marychurch	12,559	9.0%	50
St Peter's with St Mary's	6,896	4.9%	54
Tormohun	13,048	9.4%	43
Wellswood	7,084	5.1%	61

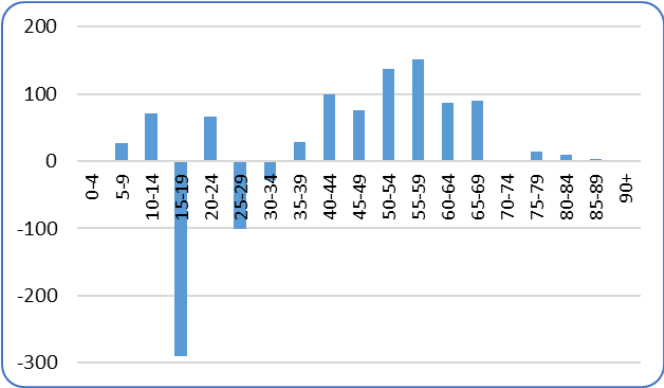
Source: [Office for National Statistics](#)

Migration

In 2023, there was a net gain in the Torbay population of around 440 residents due to internal migration from elsewhere in the UK- an estimated 6,578 moved into Torbay and 6,138 moved out. This net change by age is shown in Figure 2. The highest net loss was in the 15-19 age group (around -290) and the highest net gain were people in their 50s (around 290). Some 15-19 year olds will be living away from home attending further education. Internal migration contributes to the ageing of Torbay’s population. International migration has increased after being negligible between 2018 to 2021. In 2024, 204

people are resident via Homes for Ukraine, 10 via Afghan Resettlement and 40 via supported asylum dispersal. In 2023, 289 of a net 638 international migration were aged 0-17yrs.

Fig 2: Torbay’s estimated net internal migration by age group



Source: Office for National Statistics tables IM2023-T1 and -T2

Life Expectancy and Healthy Life Expectancy

In Torbay, life expectancy at birth (2022) is 78 years for men and 83 years for women ([OHID](#)). However, (for 2018-2022) there is an 11 year life expectancy gap between men who live in the least and most deprived 20% of areas and a 6 year gap for women. Torbay is ranked as the most deprived local authority in the South West. Approximately 27% of the population live in areas that are amongst the 20% most deprived in England ([IMD 2019](#)).

In Torbay, healthy life expectancy at birth (2018-20) is 64 years for men and 62 years for women.

Disability

In the 2021 Census, 33,224 Torbay residents (23.8%) were disabled under the Equality Act. This percentage is significantly higher than England or the South West. 11% said their day-to-day activities were limited a lot and 13% said their day-to-day activities were limited a little.

Ethnicity

In the 2021 Census, 96.1% of residents identified as White (92.1% White British), 1.6% as Asian, 0.3% as Black, 1.5% as Mixed, and 0.4% as Other.

Households

In the 2021 census, Torbay had 63,000 households. In 2023, Torbay had 2,834 vacant dwellings including 1,237 long-term vacant dwellings. ([GOV.UK](#))

More details can be found in the Demographics chapter of our [JSNA](#) and documents on [Equality Act 2010 Protected Characteristics](#).