

The purpose of this profile is to give an overview of the current and future population of Torbay. This is to provide local summary statistics and help organisations to plan future services appropriately.

Torbay had 1,889 deaths and 949 births in 2024. Without inward migration, Torbay’s population would shrink with falling births. Torbay’s overall profile is one that is older than the England average

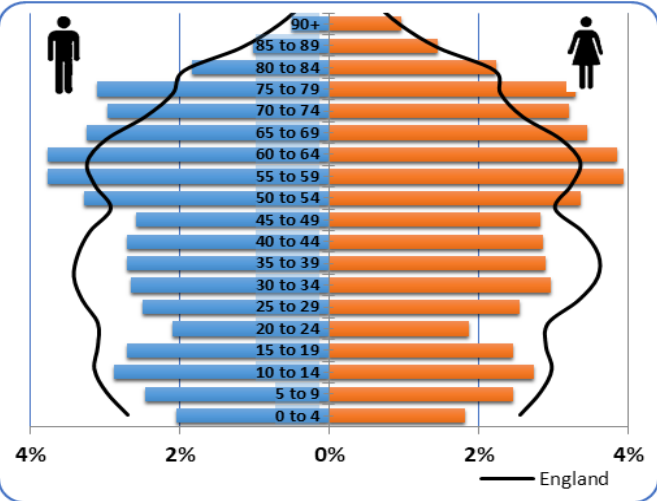
Headlines

- Torbay’s total population is estimated to grow up to 3.6% between 2024 and 2034 (Table1). This is less than England as a whole, which is estimated to grow by 4.6%.
- By 2034, Torbay’s population aged 65+ is expected to increase by 23% from around 38,200 to 47,200, and Torbay’s population aged 80+ is expected to increase by around 37% to 15,450.
- In 2024, 949 Torbay residents were born and 1889 Torbay residents died, a gap of 940 between births and deaths. In 2023 the gap was 1,000.

Ageing

Overall, Torbay has an ageing population, with proportionately more older people compared to England, shown by the bars that overlap the black line in Figure 1 below.

Fig 1 Population pyramid for Torbay (2024)



Source: Office for National Statistics mid-year population estimates, 2024

Estimated counts of residents by age group over time are presented in Table 1.

The increase in the older 65+ age groups and especially 80+, could increase need and demand for services and infrastructure such as adult social care, and primary, secondary and tertiary healthcare.

As Torbay’s population ages, the ratio of the workforce to retirement age population is expected to decrease. In 2024, for every person

of retirement age, there were 2.1 people of working age in Torbay. This ratio is projected to fall to 1.9 in 2029 and 1.7 in 2034. This compares to 3.4 people in England (2024).

Table 1: Current and future resident population by age group in Torbay (2024-2034)

Age group	2024 (latest)	2029	2034	% change (from 2024 - 2034)
0-4	5,389	5,183	5,056	-6%
5-9	6,895	5,872	5,575	-19%
10-14	7,882	7,129	6,230	-21%
15-19	7,256	7,443	6,896	-5%
20-24	5,544	5,806	6,124	10%
25-29	7,055	6,521	6,863	-3%
30-34	7,864	7,335	7,024	-11%
35-39	7,853	8,192	7,861	0%
40-44	7,810	8,291	8,743	12%
45-49	7,570	8,363	8,991	19%
50-54	9,320	8,096	9,035	-3%
55-59	10,783	10,107	8,892	-18%
60-64	10,671	11,662	10,782	1%
65-69	9,369	11,224	12,041	29%
70-74	8,650	9,356	10,969	27%
75-79	8,965	8,141	8,723	-3%
80-84	5,713	7,564	6,884	20%
85-89	3,478	4,084	5,515	59%
90+	2,059	2,507	3,050	48%
All ages	140,126	142,877	145,253	4%

Source: Office for National Statistics mid-year population estimates 2024, [population projections](#) (2022 based). May not sum due to rounding.

Towns and Wards

A population summary by town and electoral ward is shown in Table 2. There is demographic variation with older populations in Wellswood, and Churston with Galmpton, and a younger population in King’s Ash, Barton with Watcombe, Ellacombe and Collaton St Mary.

Migration

In 2024, there was a net gain in the Torbay population of around 505 residents due to

internal migration from elsewhere in the UK- an estimated 6,856 moved into Torbay and 6,351 moved out. 2023’s net change by age is shown in Figure 2. The highest net loss was in the 15-19 age group (around -327) and the highest net gain were people in their 50s (around 280). Some 15-19 year olds will be living away from home attending further education. Internal migration contributes to the ageing of Torbay’s population.

Table 2: Estimated resident population by electoral ward, Torbay, 2022

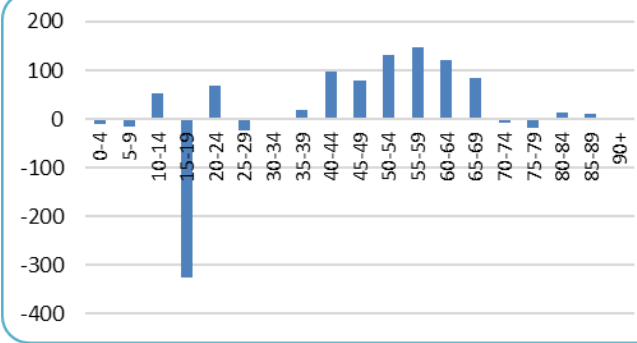
	Number	% of Torbay pop	Average age (years)
Torbay	139,479	-	49
Town			
Brixham	16,781	12.0%	55
Paignton	53,316	38.2%	50
Torquay	69,382	49.7%	46
Ward			
Barton with Watcombe	12,078	8.7%	40
Churston with Galmpton	7,103	5.1%	57
Clifton with Maidenway	8,153	5.8%	47
Cockington with Chelston	8,243	5.9%	47
Collaton St Mary	3,373	2.4%	42
Ellacombe	8,276	5.9%	41
Furzeham with Summercombe	9,885	7.1%	56
Goodrington with Roselands	7,454	5.3%	54
King's Ash	7,919	5.7%	38
Preston	10,550	7.6%	52
Roundham with Hyde	8,764	6.3%	51
Shiphay	8,094	5.8%	43
St Marychurch	12,559	9.0%	50
St Peter's with St Mary's	6,896	4.9%	54
Tormohun	13,048	9.4%	43
Wellswood	7,084	5.1%	61

Source: [Office for National Statistics](#)

International migration has increased after being negligible between 2018 to 2021 but is projected to fall again. In 2025, 227 people are resident via Homes for Ukraine, 10 via Afghan Resettlement and 47 via supported asylum dispersal. In 2023,

326 of a net 888 international migration were aged 0-17yrs.

Fig 2: Torbay’s estimated net internal migration by age group (2023)



Source: Office for National Statistics [mid-2024 population estimates](#)

Life Expectancy and Healthy Life Expectancy
In Torbay, life expectancy at birth (2023) is 78.7 years for men and 83.1 years for women ([OHID](#)). However, (for 2021-2023) there is an 9.3 year life expectancy gap between men who live in the least and most deprived 10% of areas and a 6 year gap for women ([OHID](#)). Torbay is ranked as the most deprived local authority in the South West. Approximately 27% of the population live in areas that are amongst the 20% most deprived in England ([IMD 2019](#)).

In Torbay, healthy life expectancy at birth (2021-23) is 62.3 years for men and 62.7 years for women ([OHID](#)).

Disability
In the 2021 Census, 33,224 Torbay residents (23.8%) were disabled under the Equality Act. This percentage is significantly higher than England or the South West. 11% said their day-to-day activities were limited a lot and 13% said their day-to-day activities were limited a little.

Ethnicity
In the 2021 Census, 96.1% of residents identified as White (92.1% White British), 1.6% as Asian, 0.3% as Black, 1.5% as Mixed, and 0.4% as Other.

Households
In the 2021 census, Torbay had 63,000 households. In 2024, Torbay had 3,135 vacant dwellings including 1,467 long-term vacant dwellings. ([GOV.UK](#))

More details can be found in the Demographics chapter of our [JSNA](#) and documents on [Equality Act 2010 Protected Characteristics](#).