

THE ENGLISH INDICES OF DEPRIVATION 2025- TORBAY

DOCUMENT PUBLISHED DECEMBER 2025

Contents

What are they?.....	2	Most deprived LSOA.....	16
Comparisons over time	2	Least deprived LSOA.....	17
Note on Rank.....	2	Comparator local authorities for Torbay	18
Rank amongst upper tier local authorities	2	References.....	19
Rank amongst lower tier district local authorities	3		
Most deprived areas	3		
The 7 deprivation domains.....	5		
Income domain	6		
Income Deprivation Affecting Children Index (IDACI).....	7		
Income Deprivation Affecting Older People Index (IDAOPI).....	7		
Employment domain	8		
Education, Skills and Training domain	9		
Children and Young People sub domain	10		
Adult Skills sub domain.....	10		
Health Deprivation and Disability domain	11		
Crime domain.....	12		
Barriers to Housing and Services domain	13		
Geographical Barriers sub domain	13		
Wider Barriers sub domain	13		
Living Environment domain.....	14		
Indoors Living Environment sub domain.....	15		
Outdoors Living Environment sub domain	15		

What are they?

The English Indices of Deprivation (IoD) 2025- commissioned by the Ministry of Housing, Communities and Local Government- measure relative levels of deprivation for small areas across England.

The small areas are known as Lower-layer Super Output Areas (LSOAs), containing approximately 1,500 residents. Each LSOA is ranked for deprivation and placed in a decile from 1 to 10 (1 is the most deprived). The data is not published at ward level.

The IoD consist of 7 domains which together create the Index of Multiple Deprivation (IMD). The IMD in 2025 is the official measure of deprivation in England. It is made up of the following domains and weightings:

- **Income** (22.5%)
- **Employment** (22.5%)
- **Education, Skills and Training** (13.5%)
- **Health Deprivation and Disability** (13.5%)
- **Crime** (9.3%)
- **Barriers to Housing and Services** (9.3%)
- **Living Environment** (9.3%)
- The Income domain contains 2 supplementary indices-
 - **Income Deprivation Affecting Children**
 - **Income Deprivation Affecting Older People**

The indices measure **relative** levels of deprivation, which is how an area ranks in relation to other geographical areas across England.

Comparisons over time

The English IoD 2025 is the 7th iteration with the one before being in 2019. For the 2025 iteration, new methodologies, geographies and datasets have been used which makes it less directly comparable to previous iterations.

Changes in ranks over time are relative to other areas. If all areas become more or less deprived by the same amount then the rank will stay the same. If an area's rank improves this could actually be because other

areas have become more deprived rather than that the area has become less deprived. A worsened ranking could be attained even if the area has become less deprived but not to the same extent as the other areas.

It must also be taken into account that previous iterations of the IoD have been modified and updated which can result in changes in ranking.

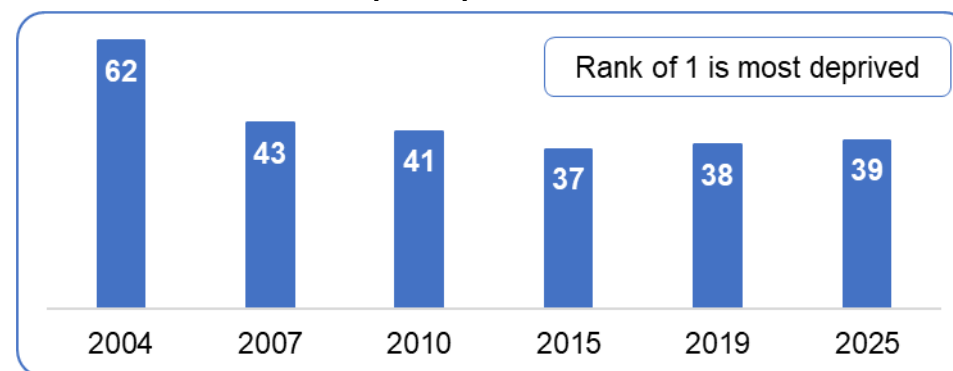
Note on Rank

Please note that at local authority (LA) level the 'rank' is called the 'rank of the average rank' in the English IoD as it is an average of all the LSOA ranks within that area.

Rank amongst upper tier local authorities

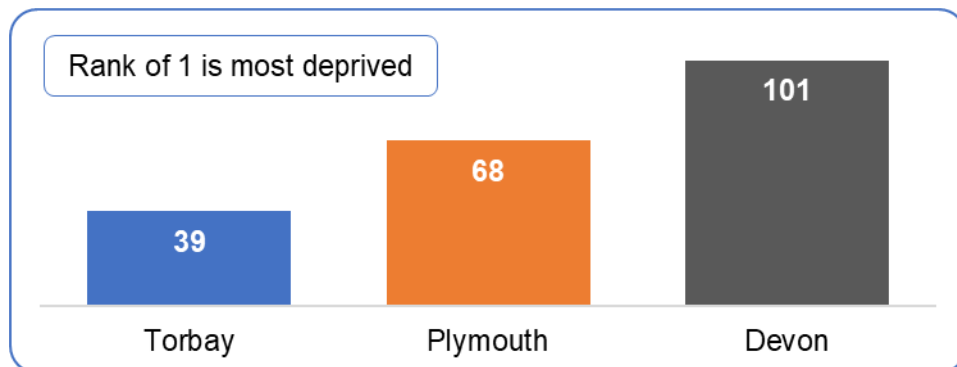
Torbay is ranked as the 39th most deprived upper tier LA in England in the IMD 2025 (Fig 1). Torbay has had virtually the same rank for a number of IMD iterations. In 2025 there are 153 upper tier LAs, 2019 had 2 fewer (151), in 2015 there were 152, and 2004 to 2010 had 149.

Fig 1: Torbay's rank of relative deprivation amongst upper tier local authorities, Index of Multiple Deprivation



Torbay has a more deprived ranking than the other upper tier LAs Devonwide (Fig 2). Torbay is ranked as the most deprived upper tier LA in the South West out of 15 in 2025 and has been in this position since 2007.

Fig 2: Rank of relative deprivation amongst upper tier local authorities, Index of Multiple Deprivation 2025



Rank amongst lower tier district local authorities

Torbay is ranked the 50th most deprived of 296 district LAs in 2025. In 2019 Torbay was 48th of 317 districts.

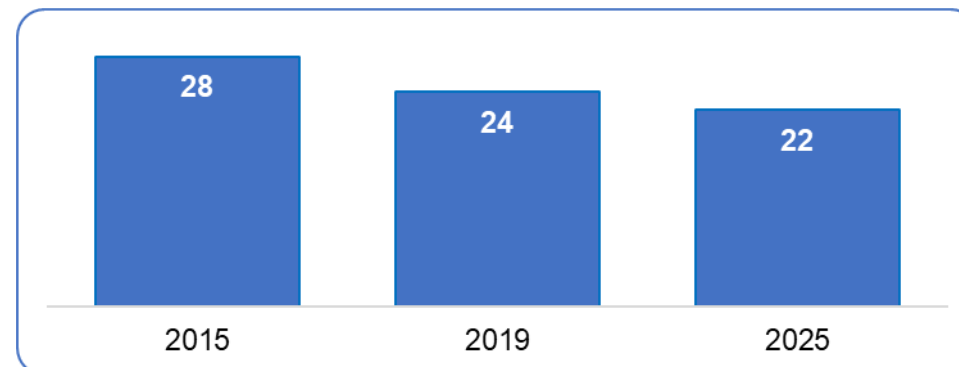
Torbay is ranked as the most deprived of the 27 South West district LAs in 2025 and has been the most deprived from the 2015 IMD onwards.

Most deprived areas

Torbay has 91 small areas (LSOAs), and 22 of these are ranked by the IMD as within the 20% most deprived areas in England (Fig 3) in 2025.

The number of LSOAs within the 20% most deprived areas in England has ranged from 22 to 28 in the last decade (Fig 3). As previously noted this is relative deprivation so they are within the 20% most deprived areas compared to the deprivation levels of the other areas in England at that time. Also, the IoD has been updated and modified over time as stated on page 2. In 2015 and 2019 Torbay contained 89 LSOAs, so 2 fewer than in 2025.

Fig 3: Number of Torbay small areas (LSOAs) within the 20% most deprived in England, Index of Multiple Deprivation



The percentage of Torbay's population living within the 20% most deprived areas in England is 26% in 2025 (Fig 4). This uses the Office for National Statistics population estimates.

Fig 4: Percentage of Torbay's population living in the Index of Multiple Deprivation 20% most deprived areas in England

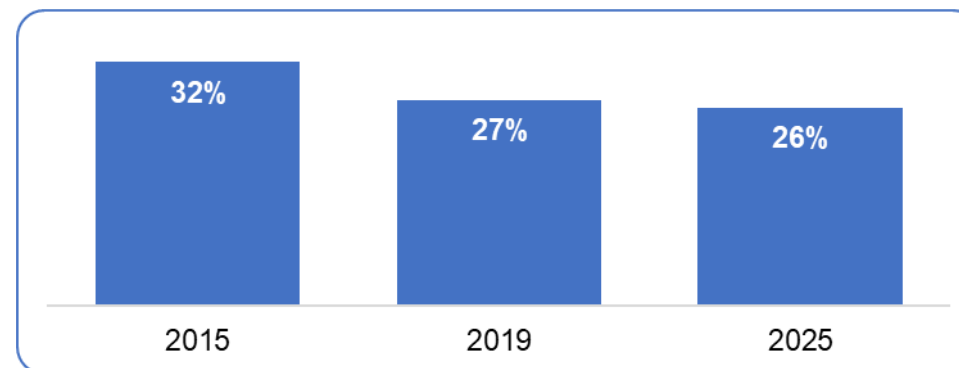
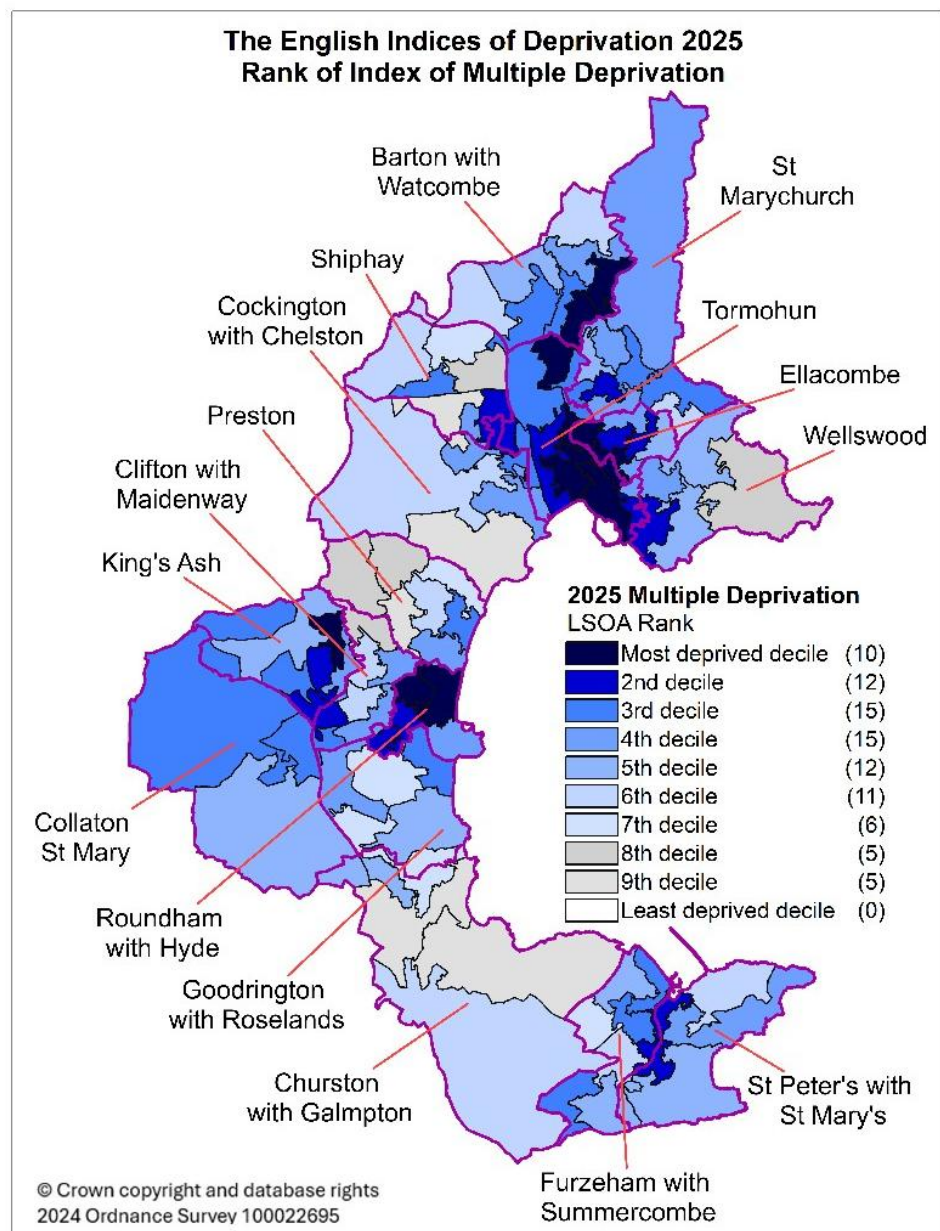


Fig 5: Map showing Index of Multiple Deprivation (IMD) rank of small areas (LSOAs) in Torbay, 2025



The map of Fig 5 places Torbay's LSOAs into 10 deciles according to their rank with the most deprived shown as a darker colour and the least deprived as a lighter colour.

The 22 LSOAs which are ranked as within the 20% most deprived areas in England are in the most deprived decile and the 2nd decile. They are mainly concentrated in the more central areas of Torquay, Paignton and Brixham, with pockets in other areas such as within Barton with Watcombe and King's Ash wards.

The 10 Torbay LSOAs that are within the IMD's 10% most deprived areas in England in 2025 were also in the 10% most deprived areas in the 2015 and 2019 iterations of the IoD, so for at least the last decade. These LSOAs are shown with the darkest colour on the map.

The least deprived areas of Torbay include areas within Preston, Churston with Galmpton and Cockington with Chelston wards, amongst others. There are 10 LSOAs within the 8th to 10th deciles.

The 7 deprivation domains

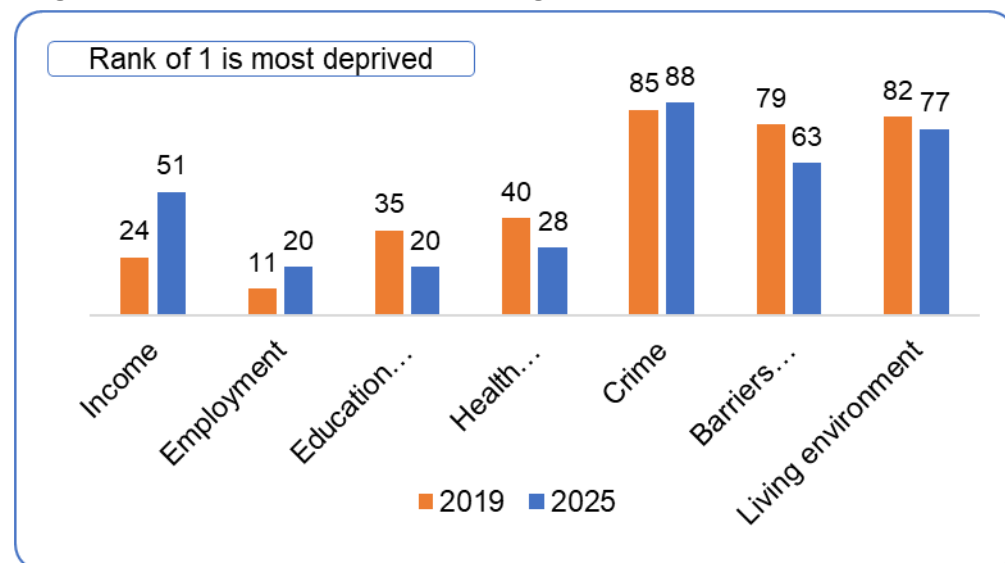
The English IoD consist of 7 domains which together make up each area's rank in the IMD. Each domain is itself ranked.

In 2025 for Torbay the domains with the most deprived ranks are the Employment domain and the Education, Skills and Training domain (1 is most deprived) (Fig 6). These are followed by the Health Deprivation and Disability domain. These ranks are out of the 153 upper tier LAs.

In 2025 the Income and Employment domains are both around twice the rank number they were in 2019 (meaning they have moved to less deprived ranks). Education, Skills and Training, however, has dropped considerably to a more deprived rank. Changes in rank don't necessarily mean changes in deprivation levels, however, as ranks are relative to other geographical areas, with the IoD also updated and modified in 2025, see page 2.

The domain with the least deprived rank in both 2019 and 2025 is Crime.

Fig 6: Torbay's rank of relative deprivation in the 7 domains of the English Indices of Deprivation, amongst upper tier local authorities



Out of the 15 South West upper tier LAs, Torbay is the most deprived in the South West for the following 4 domains:

- Income
- Employment
- Education, Skills and Training
- Health Deprivation and Disability

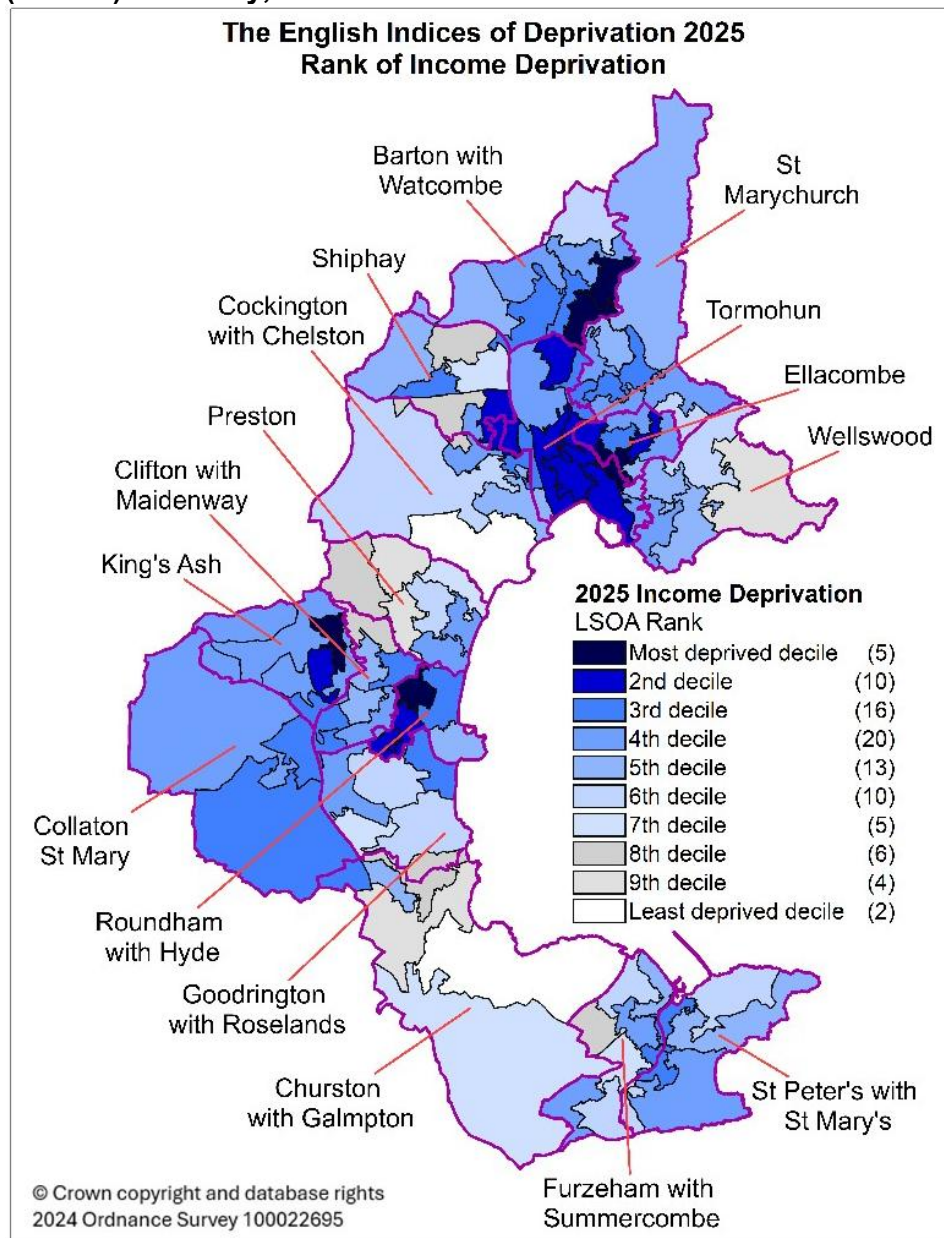
Torbay is the 4th most deprived in rank in the South West for:

- Crime
- Living Environment

Torbay is the 7th most deprived in rank in the South West for:

- Barriers to Housing and Services

Fig 7: Income Deprivation domain: Map showing rank in small areas (LSOAs) in Torbay, 2025



Income domain

This domain measures the proportion of the population experiencing deprivation relating to low income. This includes people dependent on means-test benefits, and includes both those out of work and those who are working but on low earnings and claiming a means-tested benefit. In Torbay this is calculated by the domain to be over a quarter of the population (26%), compared to 24% in Plymouth and 17% in Devon LA.

Torbay's rank is 51 out of 153 upper tier LAs (1 is most deprived).

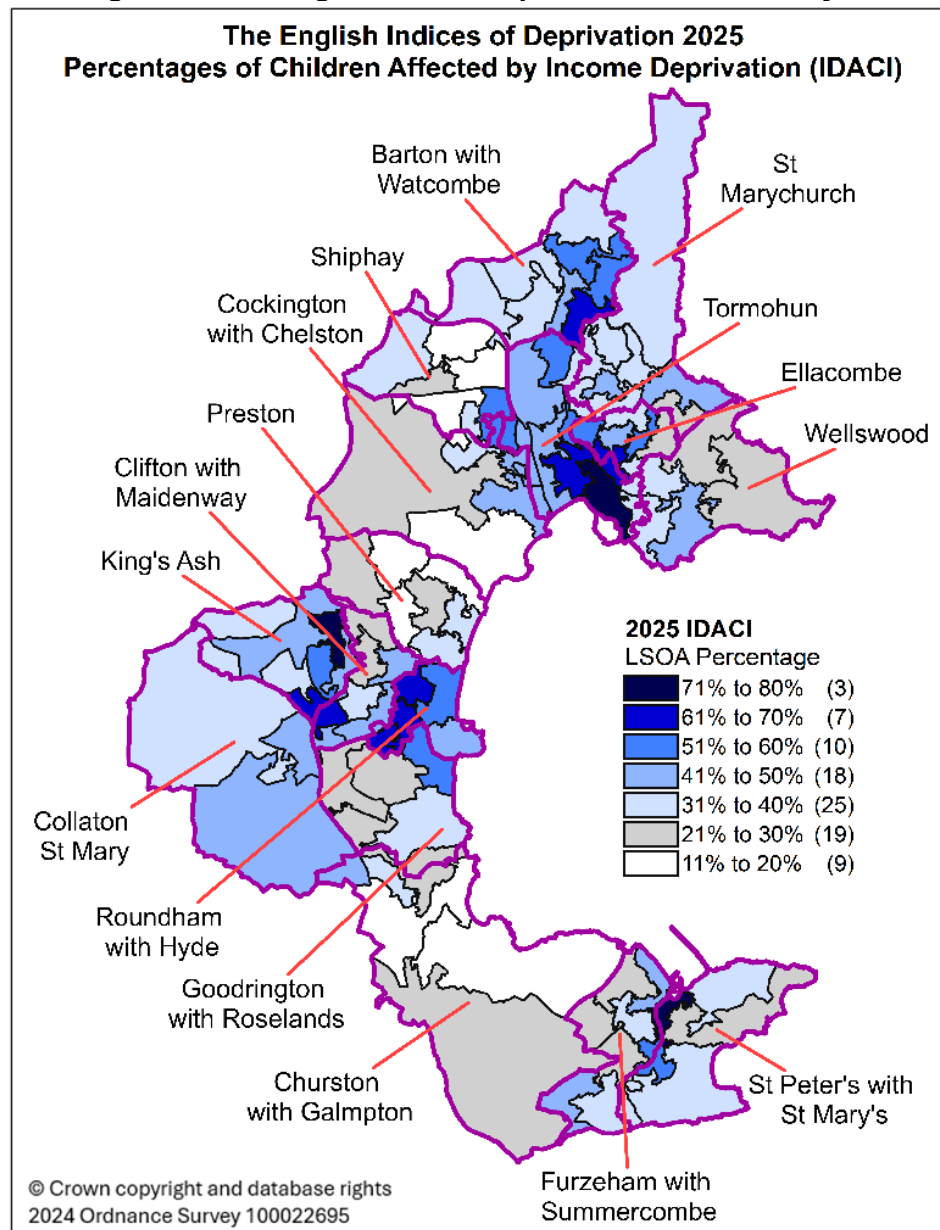
Torbay is the most deprived out of the 15 South West upper tier LAs in this domain.

Fig 7 shows that 15 LSOAs are ranked within the 20% most deprived areas in England in terms of income in 2025.

The LSOAs within the 20% most deprived areas in England are mainly concentrated in central Torquay and areas within Barton with Watcombe as well as in parts of King's Ash and central areas of Paignton.

The least deprived areas relating to income in Torbay are within Churston with Galmpton and Cockington with Chelston wards.

Fig 8: Income Deprivation Affecting Children Index (IDACI): Map showing children living in income deprived families, Torbay, 2025



There are 2 supplementary indices under the Income domain, one for income deprivation affecting children and another relating to older people:

Income Deprivation Affecting Children Index (IDACI)

The IDACI is a subset of the Income domain and measures the proportion of children aged under 16 who live in income deprived families. In 2025 in Torbay IDACI calculates this as 41% of Torbay's children.

Across the LSOAs, there is great variation in the percentage of children living in income deprived families, ranging from 11% to 80% of children, as shown in Fig 8. It can be seen that the LSOAs with the higher proportions (61% to 80% of children in income deprived families) are within the more central areas of Torquay, Paignton and Brixham as well as within areas such as King's Ash and Barton with Watcombe wards.

In the IDACI Torbay ranks as 52 out of the 153 upper tier LAs (1 is the most deprived) and is the most deprived upper tier LA in the South West.

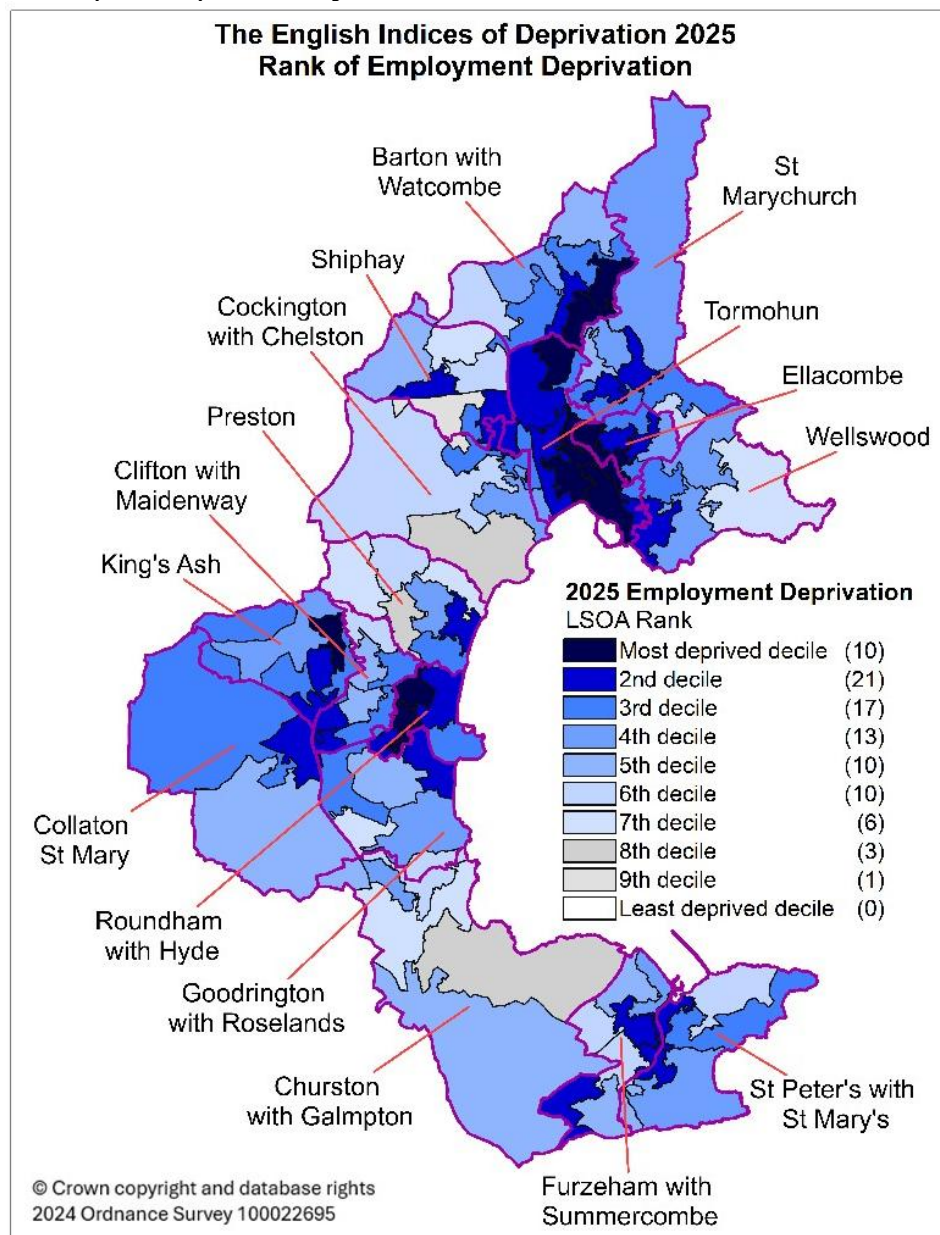
Income Deprivation Affecting Older People Index (IDAOPI)

IDAOPI is another subset of the Income domain and measures the proportion of people aged 60 or over who are income deprived. In Torbay in 2025, IDAOPI calculates this to be 18% of people aged 60+.

Across Torbay's LSOAs the proportion ranges from 3% to 53% so there is considerable variation. The 9 LSOAs with 35% or more older people calculated to be income deprived are mainly in central Torquay and Paignton, parts of Barton with Watcombe, part of King's Ash ward, and an area within Shiphay.

Torbay ranks as 61 out of the 153 upper tier LAs in the IDAOPI and is the most deprived upper tier LA in the South West.

Fig 9: Employment Deprivation domain: Map showing rank in small areas (LSOAs) in Torbay, 2025



Employment domain

The Employment domain measures the proportion of the working age population (aged 18 to 66) involuntarily excluded from the labour market. This includes people who would like to work but are unable to do so due to unemployment, sickness, disability, or caring responsibilities. In Torbay this is calculated by the domain to be almost 1 in 5 of this working age population (18%) in 2025, compared to 16% in Plymouth and 11% in Devon LA area.

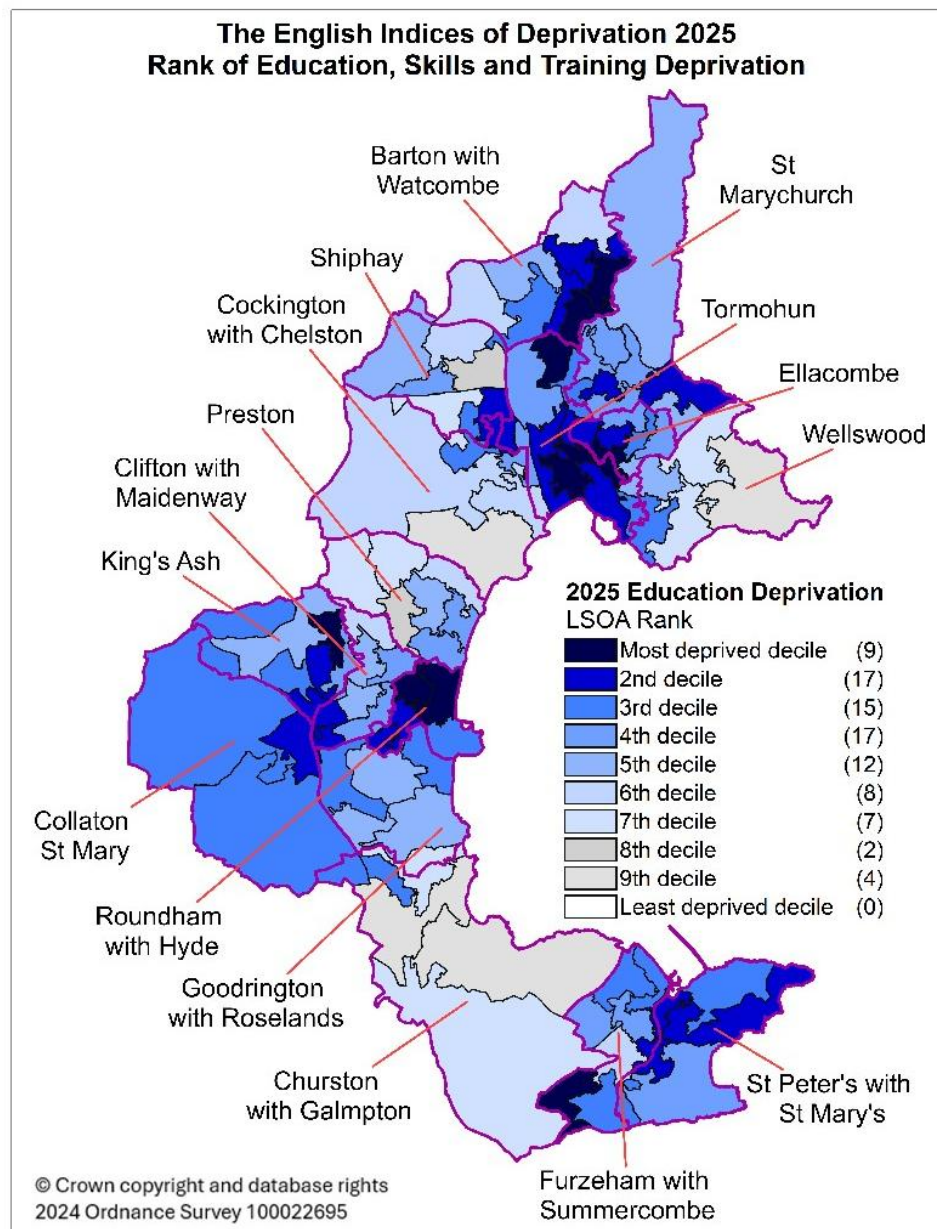
The map of Fig 9 shows that a third- 31 out of 91- of Torbay's LSOAs are within the 20% most deprived areas in England.

The LSOAs ranked as having the highest levels of employment deprivation are mainly concentrated in central areas of Torquay, Paignton and Brixham, as well as other areas such as parts of King's Ash and Barton with Watcombe wards.

The least deprived area (in decile 9) is on the edge of Shiphay ward.

Torbay has a rank of 20 for employment deprivation (1 is most deprived) out of the 153 upper tier LAs. This is the same rank as the Education, Skills and Training domain, and these 2 domains have the most deprived ranks of all domains for Torbay.

Fig 10: Education, Skills and Training Deprivation domain: Map showing rank in small areas (LSOAs) in Torbay, 2025



Education, Skills and Training domain

This domain measures lack of attainment and skills in the population.

Torbay has a rank of 20 (1 is most deprived) out of the 153 upper tier LAs in 2025 for this domain. The Employment domain also has a rank of 20 and these 2 domains have the most deprived rank out of all the domains for Torbay in 2025.

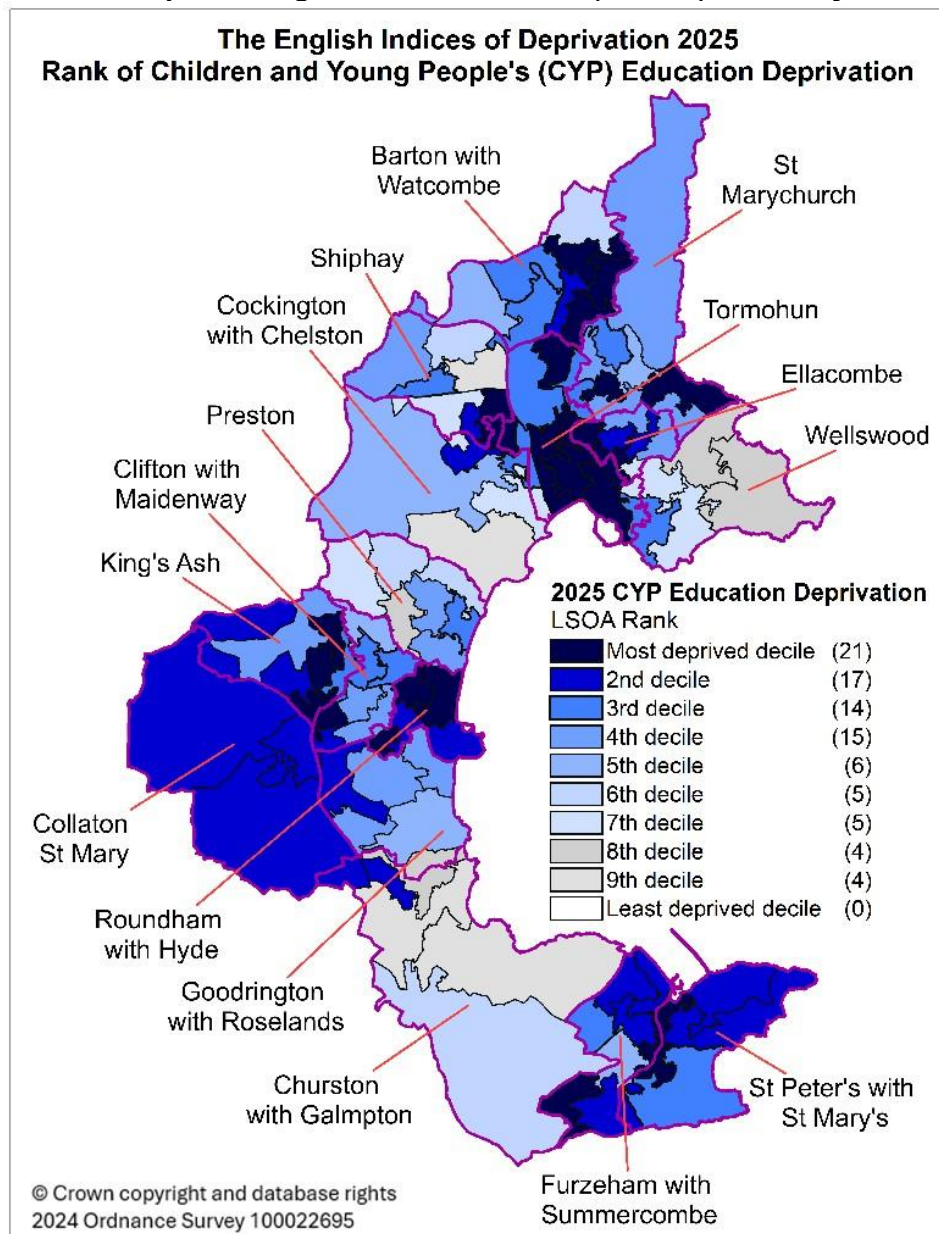
Torbay is the most deprived out of the 15 South West upper tier LAs in this domain.

There are 26 LSOAs ranked as within the 20% most deprived areas in England for Education, Skills and Training deprivation (Fig 10). 29% of Torbay's population live in these LSOAs.

The map of Fig 10 shows that the 26 LSOAs ranked as having the highest levels of Education, Skills and Training deprivation are in the more central areas of Torquay, Paignton and Brixham, as well as in other areas such as parts of King's Ash, Barton with Watcombe and St Peter's with St Mary's wards.

The indicators used for this domain fall into 2 sub domains- one for children and young people and the other for adult skills, as described below.

Fig 11: Children and Young People's Education Deprivation sub domain: Map showing rank in small areas (LSOAs) in Torbay, 2025



The Education, Skills and Training domain contains the following 2 sub domains:

Children and Young People sub domain

This measures the attainment of qualifications, entry to higher education and pupil absence. Almost 50% of the measure relates to pupil absence.

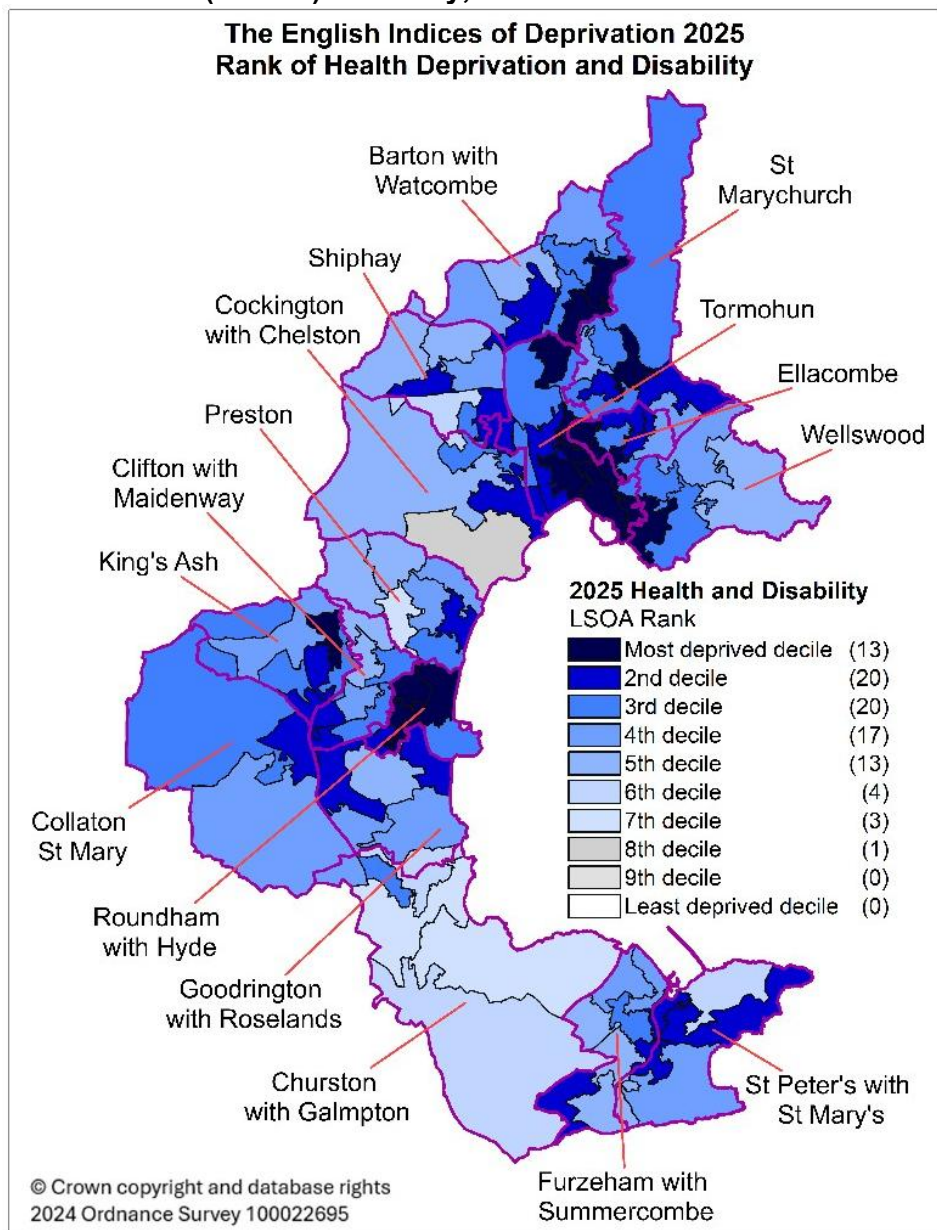
In Torbay there are 38 LSOAs out of 91 ranked within the 20% most deprived areas in England (Fig 11) for this sub domain. This is over a third of Torbay's LSOAs. These areas are found within the town centres of Torquay, Paignton and Brixham but also expand out into other areas within Torbay. 21 of these LSOAs are within the 10% most deprived areas in England (the most deprived decile).

Adult Skills sub domain

This measures those aged 25 to 66 with no or low qualifications or who cannot speak English well or at all.

In Torbay there are 7 LSOAs out of 91 which are ranked within the 20% most deprived areas in England for this sub domain, none of these are within the 10% most deprived areas in England.

Fig 12: Health Deprivation and Disability domain: Map showing rank in small areas (LSOAs) in Torbay, 2025



Health Deprivation and Disability domain

This domain measures the risk of premature death and the impairment of quality of life through poor physical or mental health. It measures morbidity, disability and premature mortality but doesn't measure behaviour or environment that may predict future health deprivation. The measures relating to disability, acute morbidity and years of potential life lost are age standardised- this adjusts the data to account for differing age population structures so Torbay's older than average population has been allowed for and won't be the cause of poorer rankings.

In 2025, Torbay has a rank of 28 (1 is most deprived) for this domain, out of 153 upper tier LAs. For Torbay, this domain is the 3rd most deprived of the 7 domains.

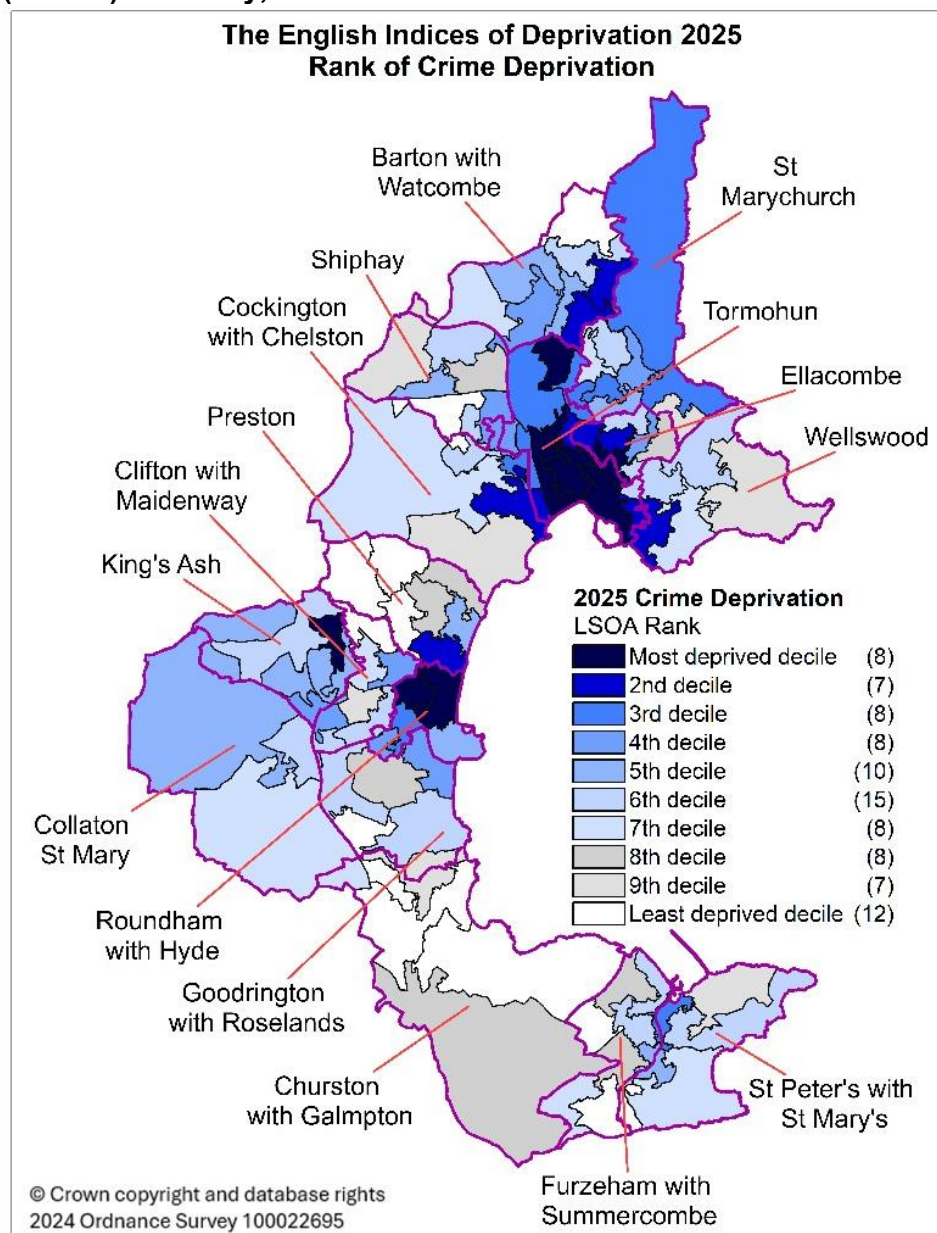
In 2025, Plymouth has a rank of 46 and Devon LA is 96 so both are less deprived in rank than Torbay. Torbay is the most deprived out of the 15 South West upper tier LAs for this domain.

The map of Fig 12 shows that all but 8 of the 91 LSOAs in Torbay are ranked within the 50% most deprived areas in England for Health Deprivation and Disability.

Over a third of LSOAs (33) are ranked in the 20% most deprived areas in England for this domain. These LSOAs are spread throughout Torquay, Paignton and Brixham. Over a third (37%) of Torbay's population live in these areas.

The most deprived 10% of LSOAs are in central areas of Torquay and Paignton, and in other areas such as parts of Barton with Watcombe, St Marychurch and King's Ash wards.

Fig 13: Crime Deprivation domain: Map showing rank in small areas (LSOAs) in Torbay, 2025



Crime domain

This domain measures the risk of personal and material victimisation at a local level. It calculates the rates of various types of crimes.

In 2025, Torbay has a rank of 88 (1 is most deprived) for this domain, out of 153 upper tier LAs. This domain has the least deprived rank of all 7 domains for Torbay.

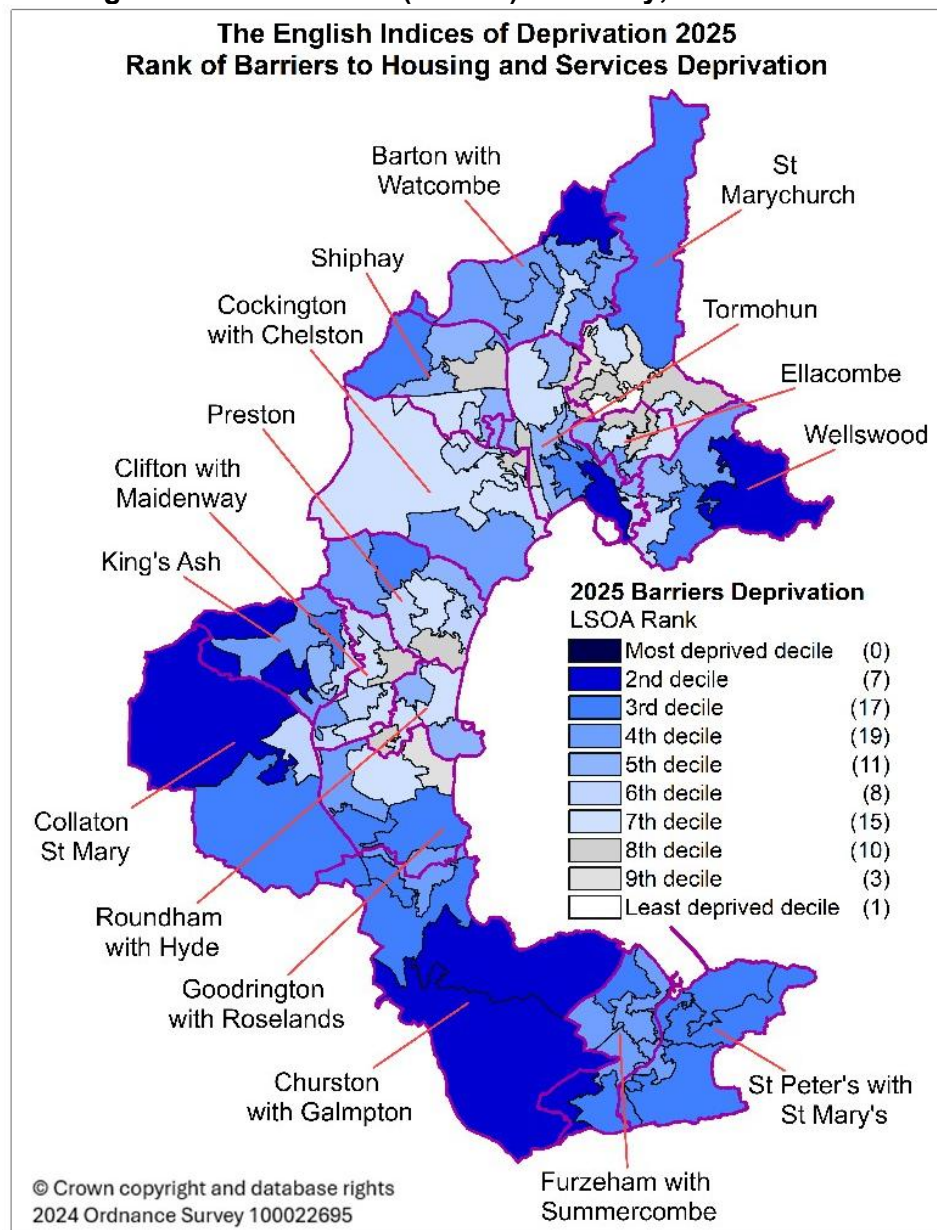
Torbay is similar to Plymouth which has a rank of 84 in 2025 whereas Devon is much higher with a rank of 149 out of 153 upper tier LAs so one of the least deprived upper tier LAs in England for this domain. Torbay is the 4th most deprived out of the 15 South West upper tier LAs for this domain.

The map of Fig 13 shows that the LSOAs are quite evenly spread between the 10 deciles for this domain, with more in the middle deciles and the least deprived decile. This reflects that Torbay has a less deprived rank for the Crime domain than the other domains.

There are 15 LSOAs ranked within the 20% most deprived areas in England. These encompass 19% of Torbay's population. These LSOAs are situated in the central areas of Torquay and Paignton as well as areas such as within Barton with Watcombe and King's Ash wards.

The least deprived LSOAs in terms of crime are mainly within Preston and Churston with Galmpton wards.

Fig 14: Barriers to Housing and Services Deprivation domain: Map showing rank in small areas (LSOAs) in Torbay, 2025



Barriers to Housing and Services domain

This domain measures the physical and financial accessibility of housing and local services

In 2025, Torbay has a rank of 63 (1 is most deprived) for this domain, out of 153 upper tier LAs. For Torbay this is the 3rd least deprived of the 7 domains.

In 2025, Plymouth has a rank of 106 for this domain- a much less deprived rank than Torbay. Devon LA however has a rank of 30- a far more deprived rank. Torbay is the 7th most deprived LA out of the 15 South West upper tier LAs for this domain.

8% of Torbay's population live in the 7 LSOAs which are within the 20% most deprived areas in England, a lower number of LSOAs and percentage of the population than for the other 6 domains for Torbay.

The map of Fig 14 shows that the locations of the most and least deprived LSOAs are generally opposite to the other domains- the most deprived areas are generally within Churston with Galmpton, Collaton St Mary and Wellswood, and the least deprived areas are generally within urban areas of Torquay and Paignton. This domain falls into 2 sub domains and the rankings of LSOAs within these are described below:

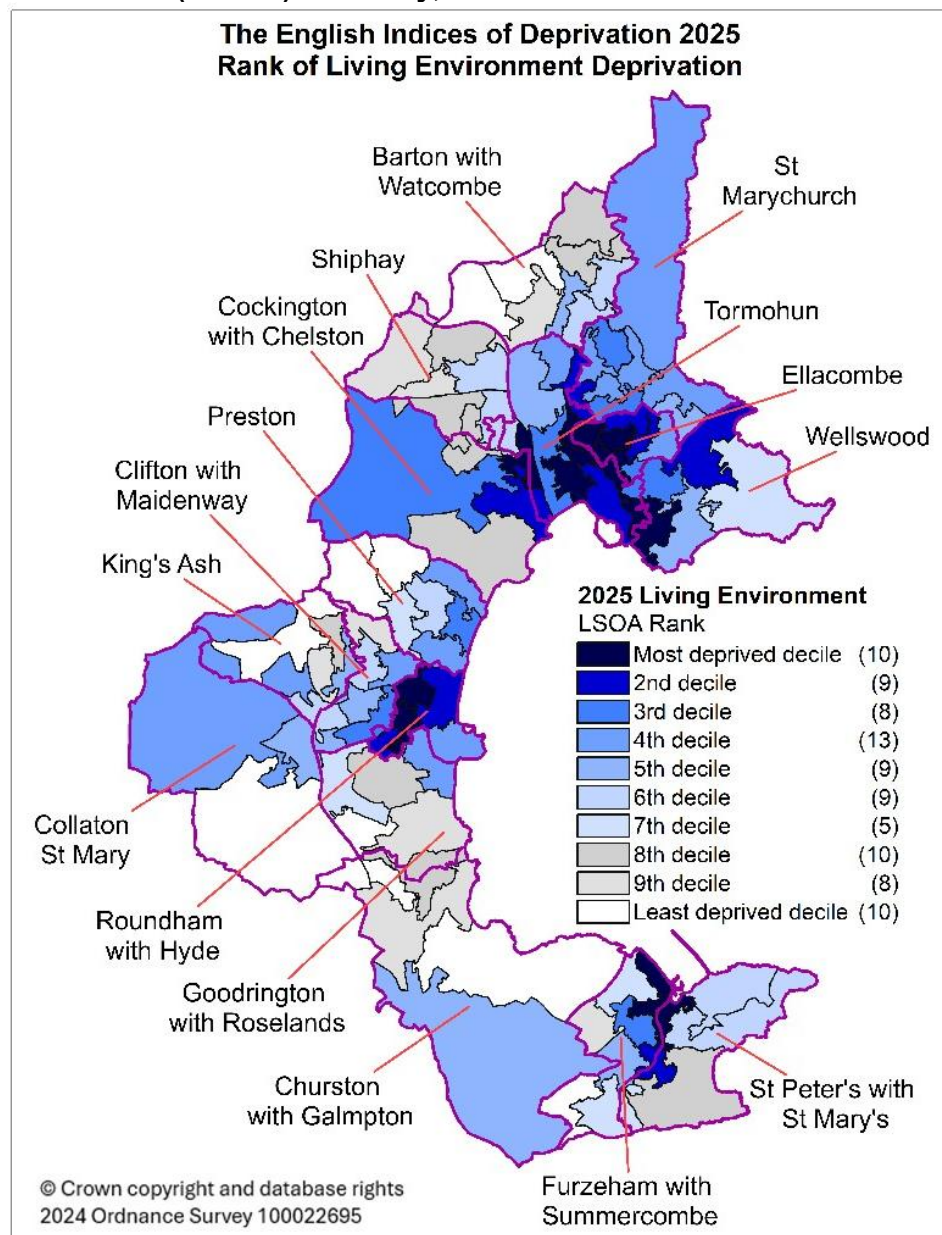
Geographical Barriers sub domain

This measures travel time to key local services and amenities by walking, cycling and public transport with 23 LSOAs in the 20% most deprived areas in England- these 23 LSOAs are areas outside of central urban areas, indicating that services and amenities are less geographically accessible outside of central areas.

Wider Barriers sub domain

Indicators for this sub domain relate to housing affordability, household overcrowding, homelessness, broadband speed and patient to GP ratio. Torbay has only 4 LSOAs in the 20% most deprived areas in England for this sub domain. These are all in central Torquay. Most LSOAs are in deciles 4 to 7 with 6 LSOAs in the lesser deprived deciles of 8 to 10.

Fig 15: Living Environment Deprivation domain: Map showing rank in small areas (LSOAs) in Torbay, 2025



Living Environment domain

This domain measures the quality of the local environment. It includes both the indoor and outdoor living environment.

In 2025, Torbay has a rank of 77 (1 is most deprived) for this domain, out of 153 upper tier LAs. This is the 2nd least deprived of the 7 domains for Torbay in 2025.

Plymouth has a rank of 106 in 2025, so a less deprived rank than Torbay, Devon is ranked at 78 for this domain so only 1 higher than Torbay.

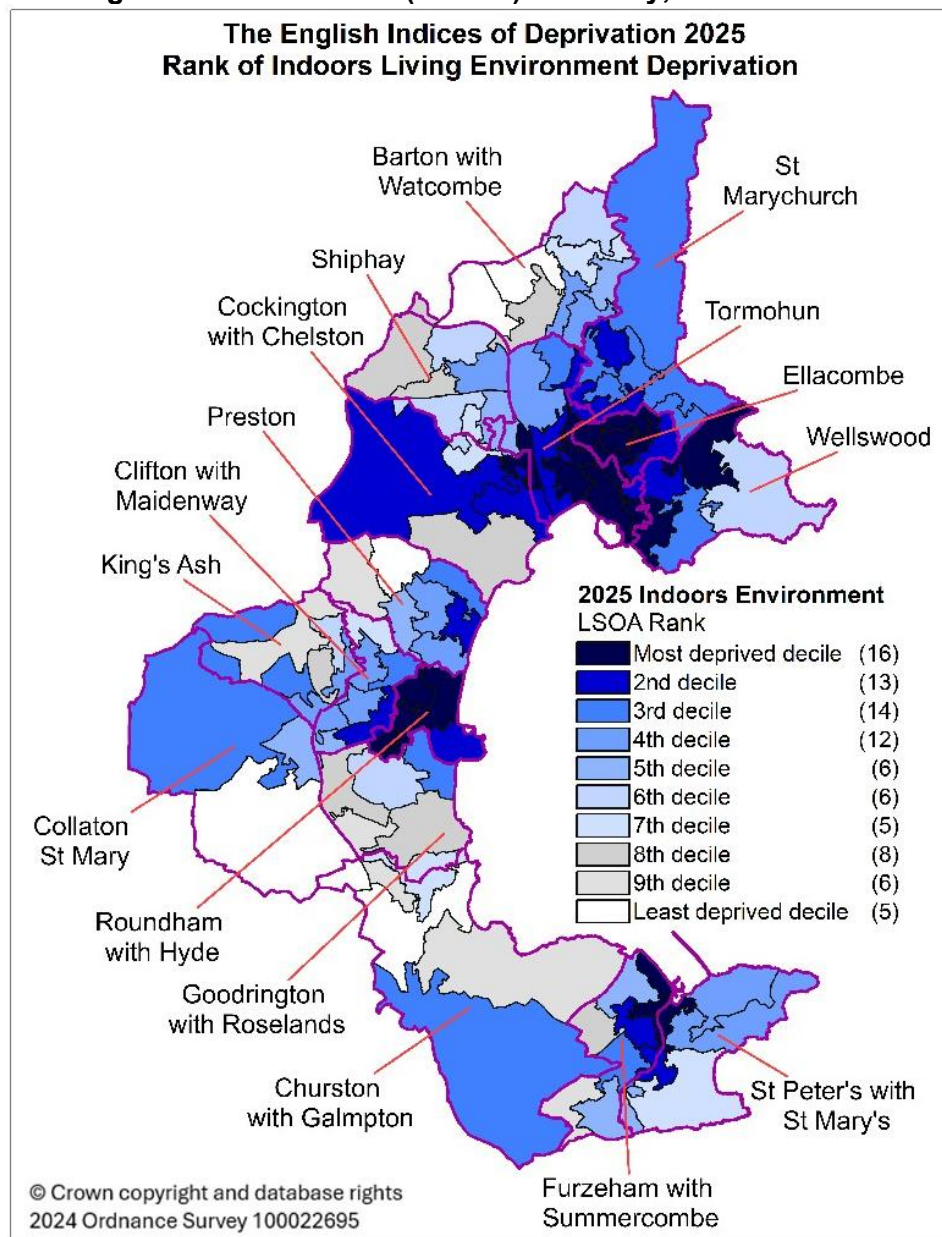
In 2025, Torbay is the 4th most deprived upper tier LA out of 15 in the South West for this domain.

19 of the 91 LSOAs in Torbay are ranked within the 20% most deprived areas in England for the Living Environment domain. This encompasses 22% of Torbay's population.

The map of Fig 15 shows that the most deprived areas are concentrated within the more central areas of Torquay, Paignton and Brixham as well as parts of Wellswood and Cockington with Chelston.

The domain falls into 2 sub domains- one for indoors living environment and another for outdoors living environment with both described below.

Fig 16: Indoors Living Environment Deprivation sub domain: Map showing rank in small areas (LSOAs) in Torbay, 2025



The Living Environment domain contains the following 2 sub domains:

Indoors Living Environment sub domain

This measures housing in poor condition, housing energy performance certificate scores and housing lacking private outdoor space.

The map of Fig 16 shows that in Torbay, 29 of the 91 LSOAs are ranked within the 20% most deprived areas in England. This encompasses central areas of Torquay and the surrounding areas, and much of Cockington with Chelston ward and part of Wellswood. The LSOAs are also located in the central areas of Paignton and Brixham, and part of Preston. These LSOAs contain a third (33%) of the Torbay population. Of the 29 LSOAs, 16 are ranked within the 10% most deprived areas in England.

Outdoors Living Environment sub domain

This sub domain measures air quality, road traffic accidents and noise pollution.

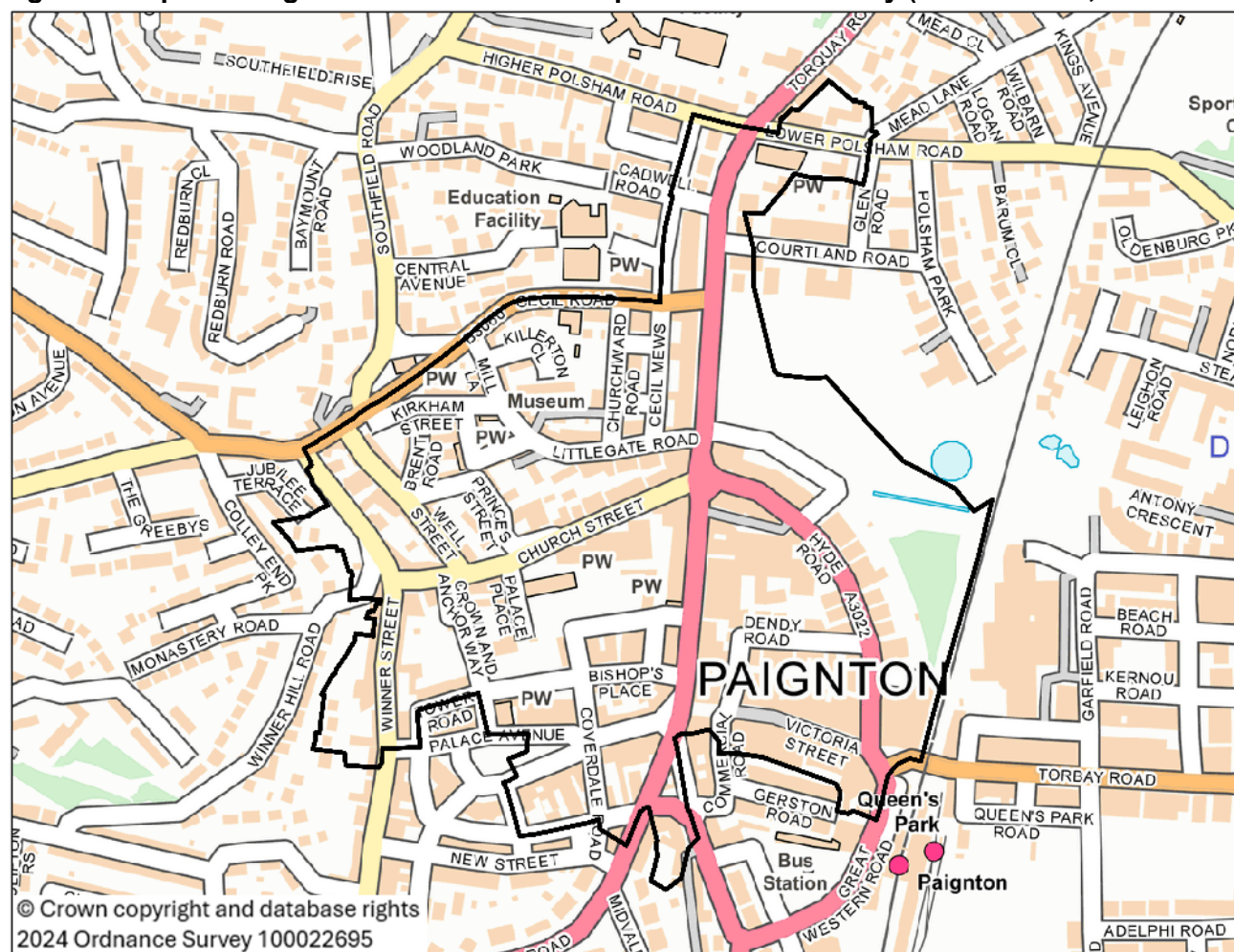
Torbay has no LSOAs within the 20% most deprived areas in England for this sub domain and only 1 LSOA in the 3rd most deprived decile (this is in central Paignton). There are 58 LSOAs within the 2 least deprived deciles- 9 and 10.

Most deprived LSOA

The most deprived LSOA in Torbay in 2025 is an area of central Paignton, in Roundham with Hyde ward, outlined in Fig 17. This LSOA was also the most deprived LSOA in Torbay for the last 2 iterations of the English IoD- for 2015 and 2019- so for at least the last decade.

It is ranked within the 10% most deprived areas in England for all domains apart from 'Barriers to Housing and Services' where it is in the 5th (middle) decile. Within this domain is the sub domain of 'Geographical Barriers' which focuses on travel time to key local services and amenities via walking, cycling and public transport. This LSOA is in the 7th decile for this sub domain (1 is most deprived) as services and amenities are geographically more easily accessible in the town centre location.

Fig 17: Central Paignton: Map showing LSOA with the most deprived rank in Torbay (404 out of 33,755 LSOAs in England), 2025

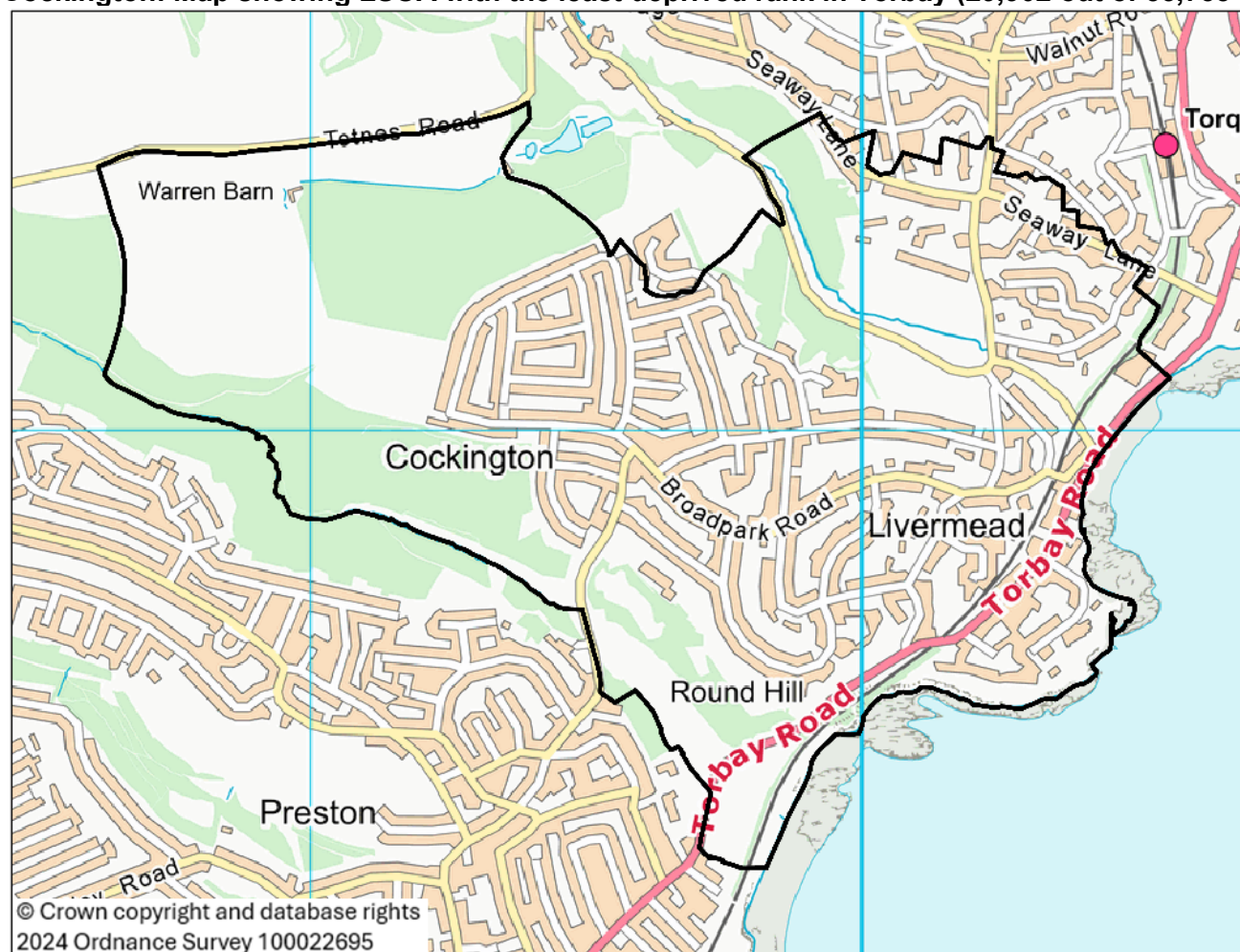


Least deprived LSOA

The least deprived LSOA in Torbay in 2025 is an area of Torquay including Livermead and Cockington, outlined in Fig 18. It is in the 9th decile and was also the least deprived LSOA in Torbay for 2015 and 2019, so for at least the last decade- it was in the 9th decile in 2015 and the 10th decile in 2019.

This LSOA is ranked within the 8th to 10th deciles for 6 of the 7 domains. It is in the 4th decile (1 is most deprived) for the 'Barriers to Housing and Services' domain. Within this domain is the sub domain of 'Geographical Barriers' where this LSOA has a high deprivation rank (2nd decile). This denotes that services and local amenities are not easily accessible through walking, cycling or public transport for residents of this LSOA.

Fig 18: Livermead and Cockington: Map showing LSOA with the least deprived rank in Torbay (29,902 out of 33,755 LSOAs in England), 2025



Comparator local authorities for Torbay

Fig 19: Rank of relative deprivation amongst NHS England statistical neighbours for Torbay, Index of Multiple Deprivation

Upper Tier Local Authority	IMD rank 2025 (1 is most deprived)
Blackpool	1
Torbay	39
Isle of Wight	43
Redcar and Cleveland	46
St. Helens	50
North East Lincolnshire	58
Darlington	70
Wirral	73
Sefton	76
Southend-on-Sea	77
East Sussex	91
Bournemouth, Christchurch and Poole	109
East Riding of Yorkshire	125
North Somerset	128
Cheshire East	135
South Gloucestershire	142

NHS England have calculated statistical neighbours of 'similar' LAs for use in Adult Social Care statistics. Fig 19 shows Torbay is the 2nd most deprived in the NHS England comparator group for Torbay. There is a broad span of deprivation rank between these LAs.

The NHS England LA group for Torbay was sourced from Office for Health Improvement and Disparities. Public Health Profiles 2025 <https://fingertips.phe.org.uk> on 4 Dec 2025.

Fig 20: Rank of relative deprivation amongst Children's services statistical neighbours for Torbay, Index of Multiple Deprivation

Upper Tier Local Authority	IMD rank 2025 (1 is most deprived)
Rochdale	15
Sunderland	24
Barnsley	31
Tameside	32
Torbay	39
Rotherham	41
Isle of Wight	43
Gateshead	44
Redcar and Cleveland	46
Telford and Wrekin	66
Plymouth	68

The Department for Education publishes these groups of LAs with similar features. Torbay is the 5th most deprived LA in the comparator group of LAs relating to children's services (Fig 20), so is in the middle of the group in terms of ranking.

The Children's services LA group for Torbay was sourced from the [Local authority interactive tool \(LAIT\)](#) on 4 Dec 2025.

References

Ministry of Housing, Communities and Local Government: [English indices of deprivation 2025](#)-

- The data files are used as well as the [statistical release](#) and [research report](#)

Ministry of Housing, Communities and Local Government: [English indices of deprivation 2019](#) and [English indices of deprivation 2015](#)

Office for National Statistics: Population estimates for small areas (2021 based), www.nomisweb.co.uk

- These were used to calculate the percentage of the population living in the 20% most deprived areas in England

Torbay Council Public Health Team: Index of Multiple Deprivation 2019 presentation

All data and documents were accessed from November to 11th December 2025

For more information about the health needs of Torbay please visit the website of Torbay Council Public Health Knowledge and Intelligence Team

<https://www.southdevonandtorbay.info/>

or email: statistics@torbay.gov.uk